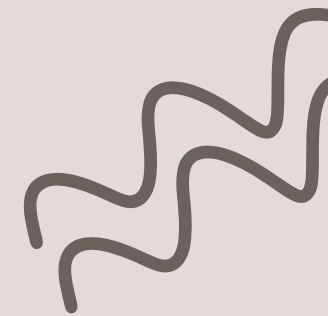
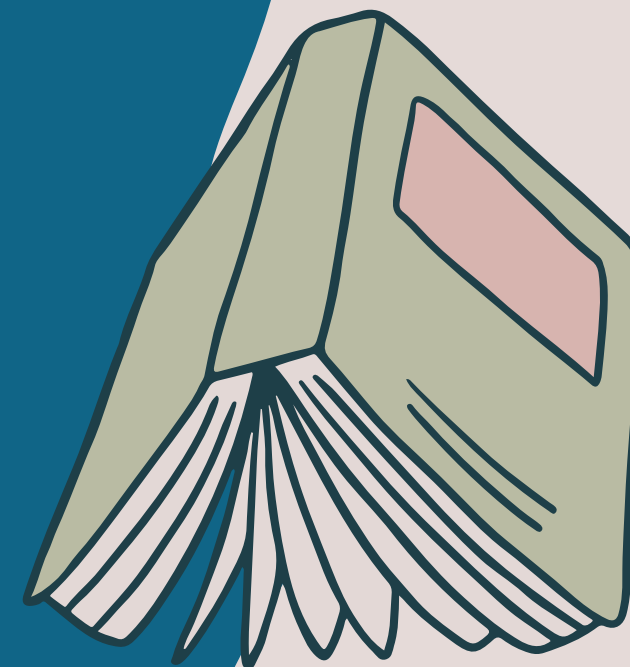
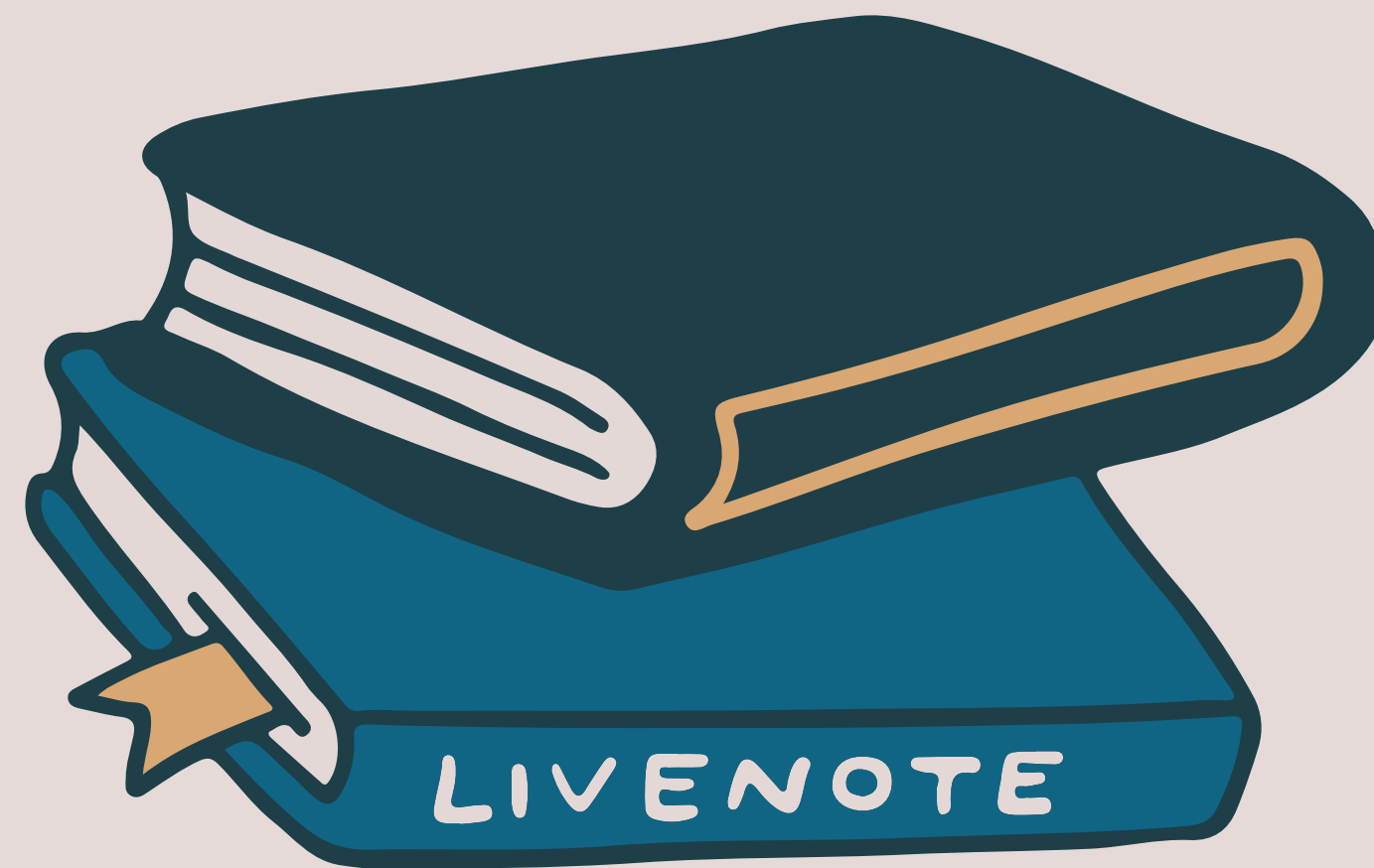


# SWAN 2025 Year in Review

Fireside Chat  
January 27, 2026

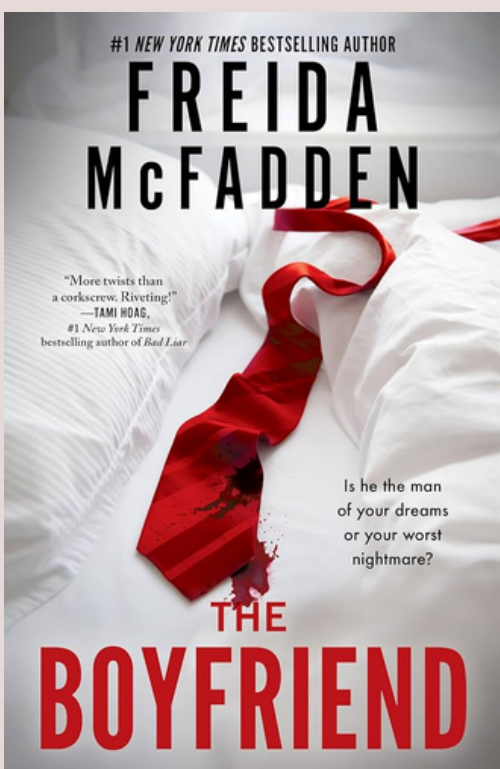
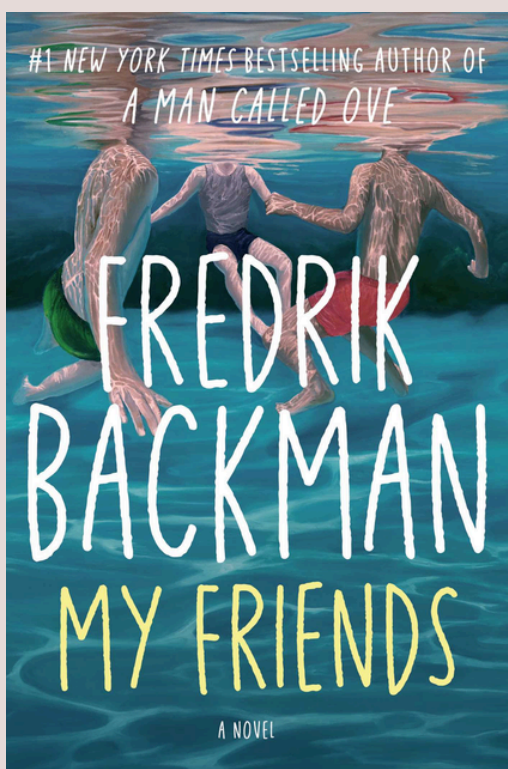
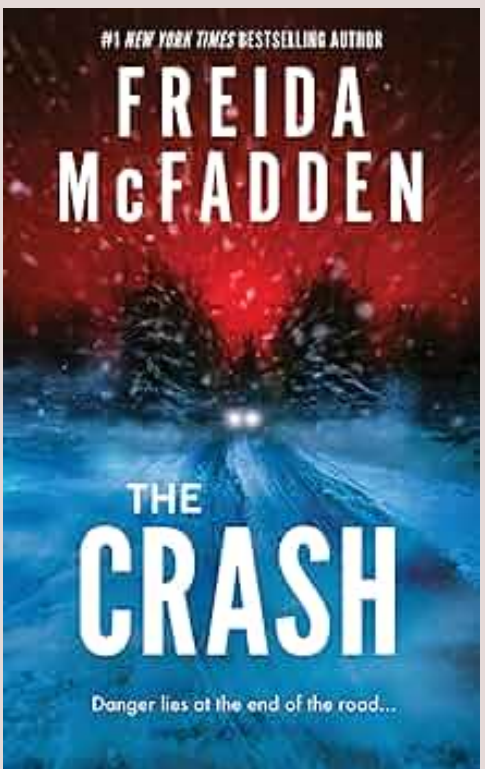
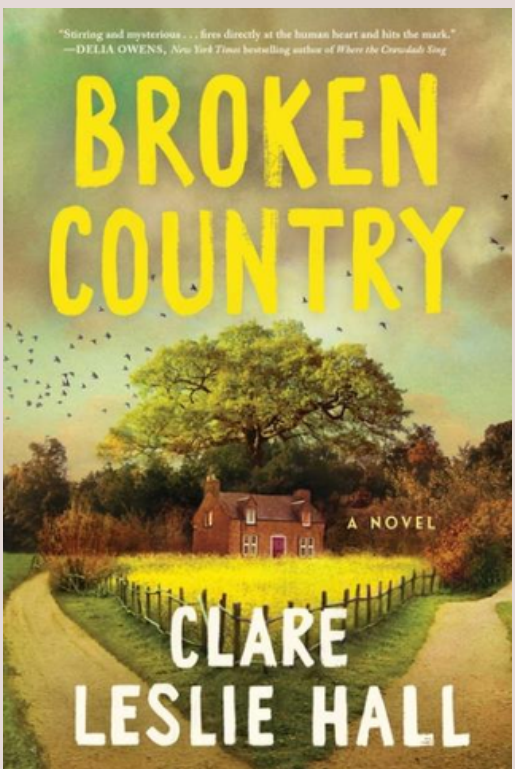
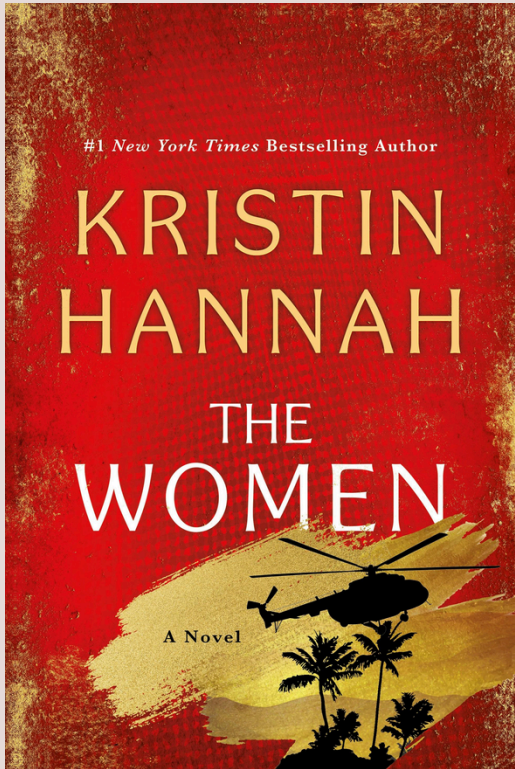
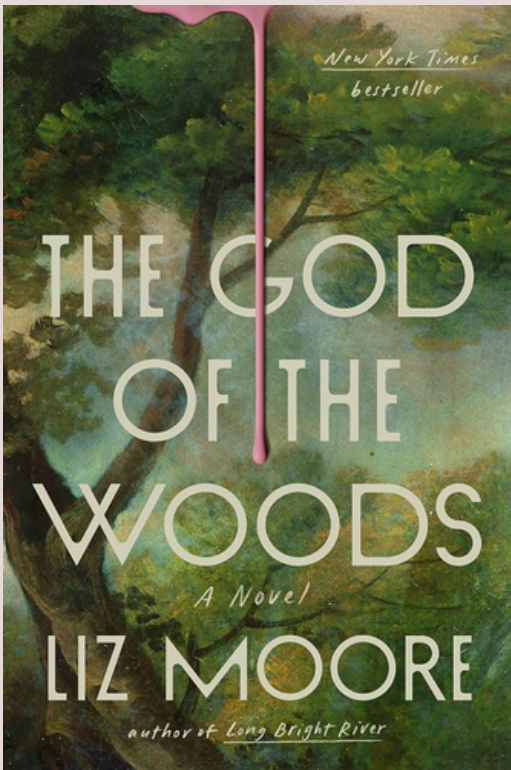
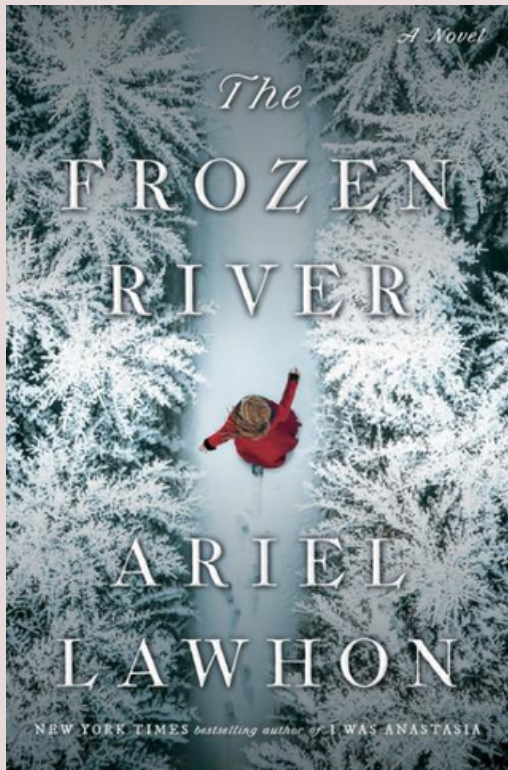
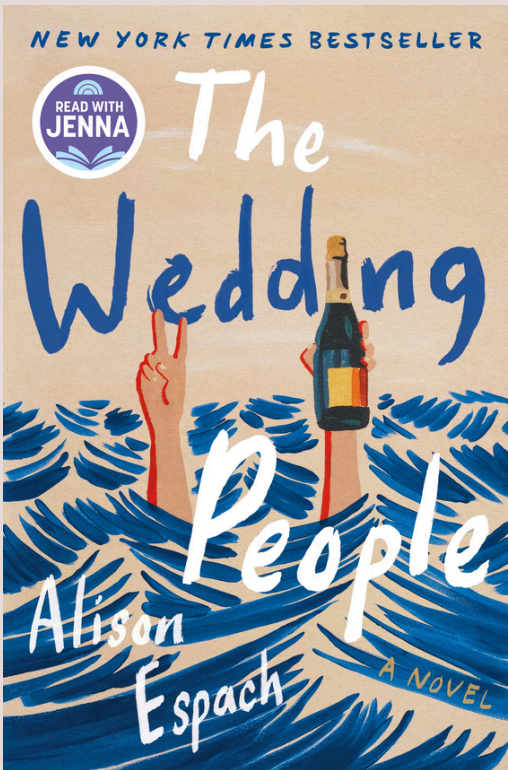
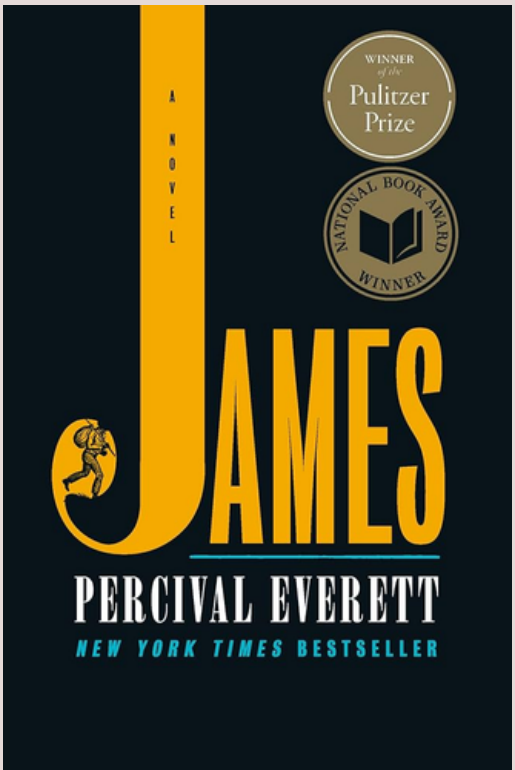
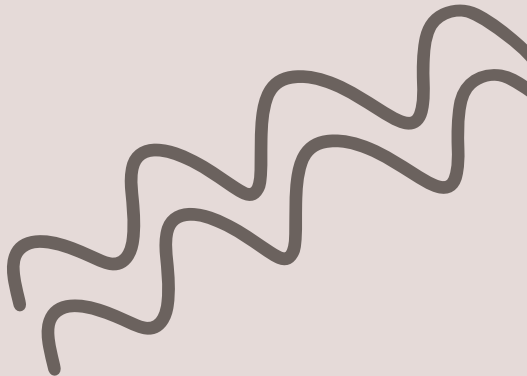


# Top Checkouts





# Adult Fiction Top 10

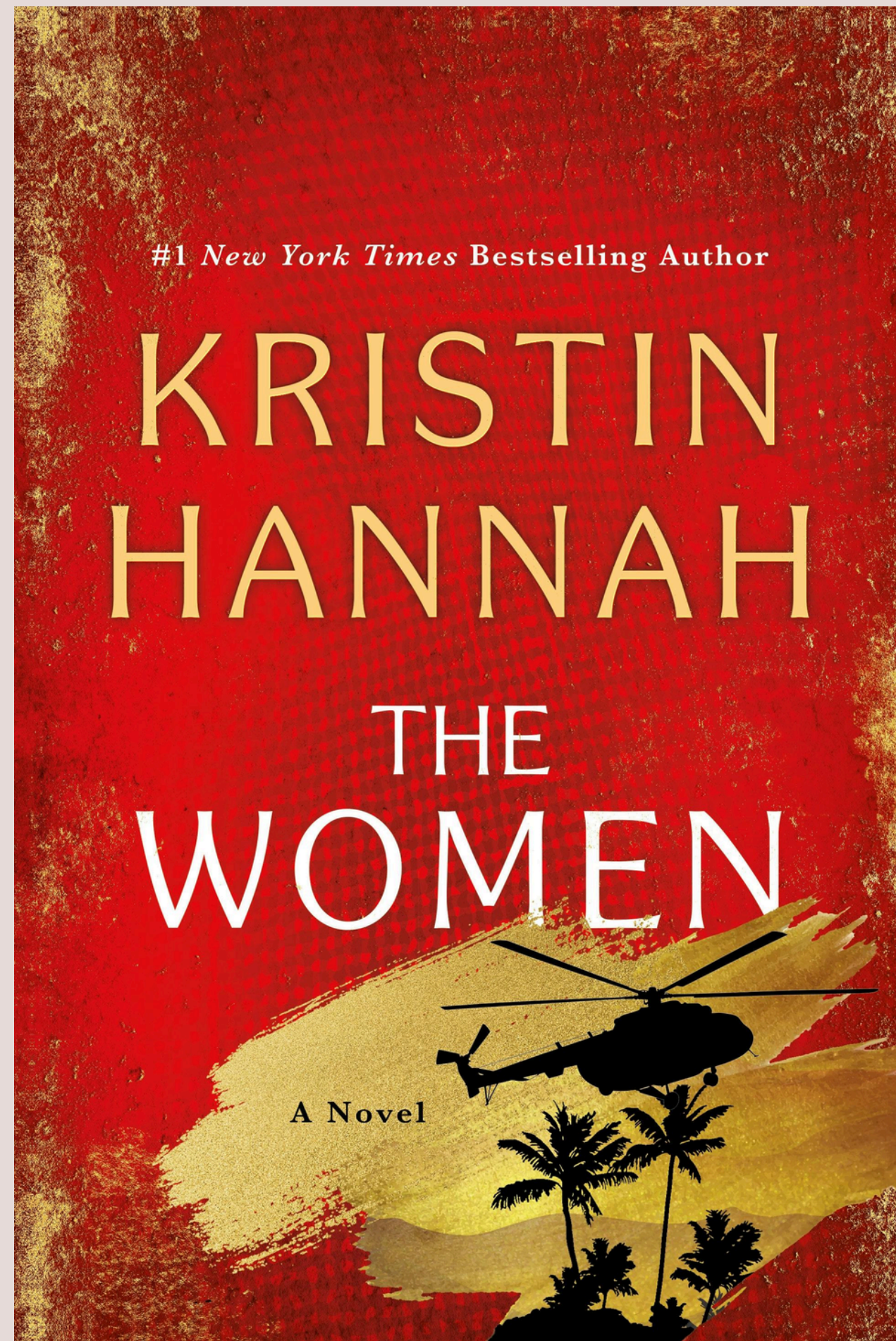




# Adult Fiction

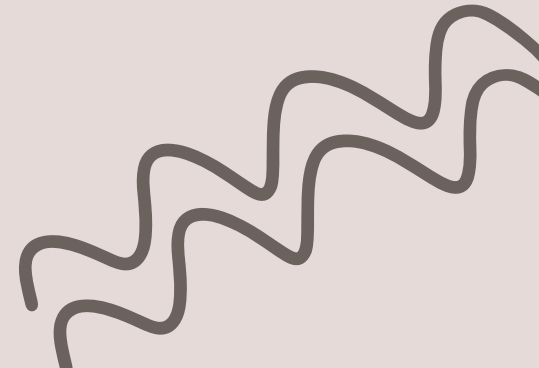


Checked out over 10  
times per day!

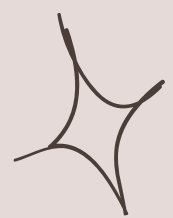
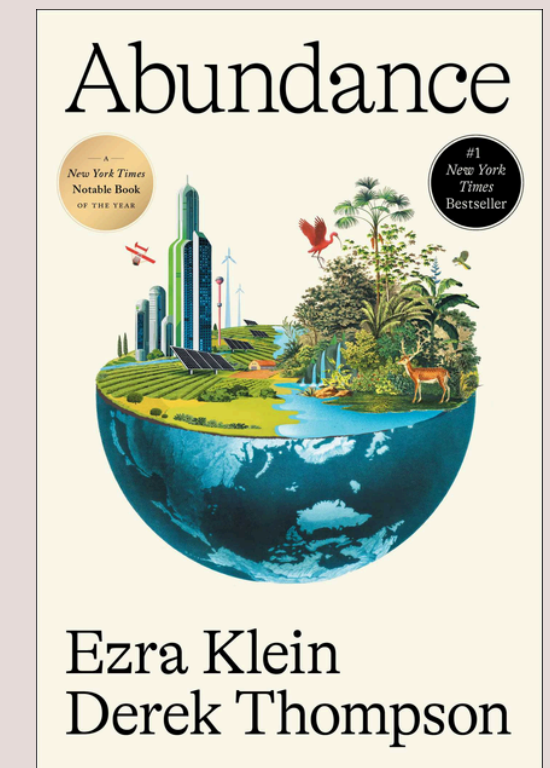
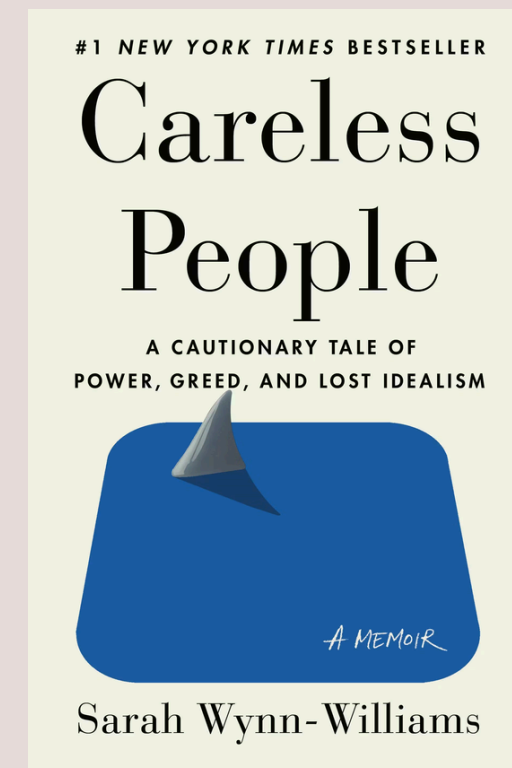
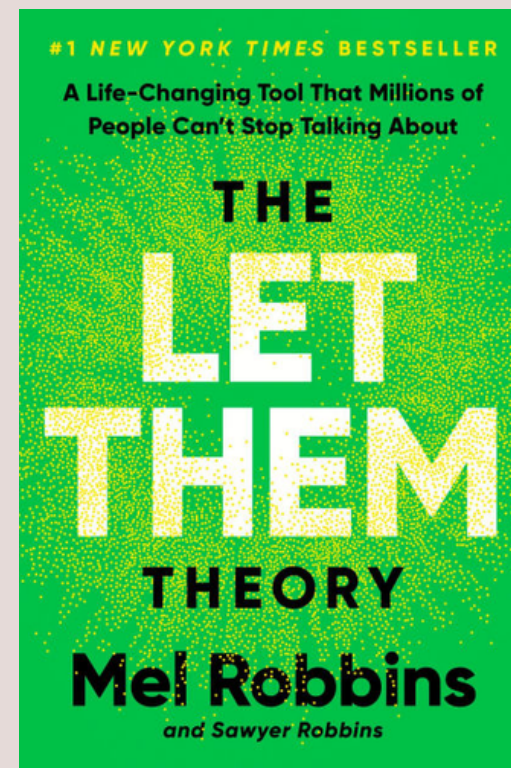
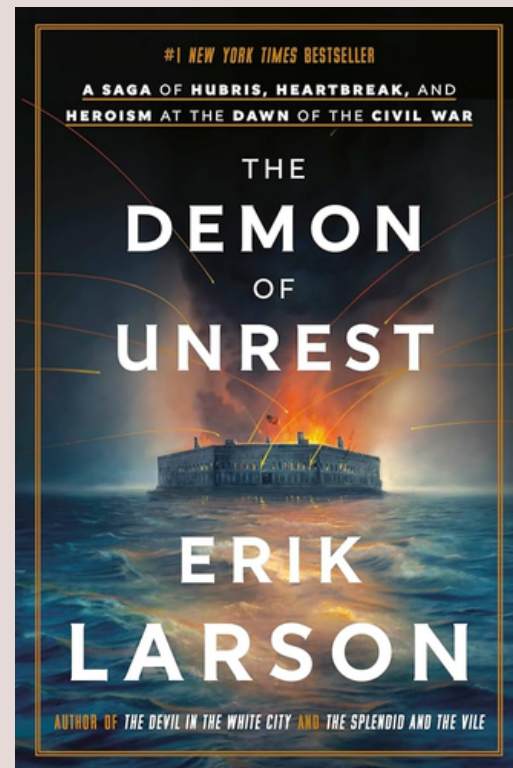
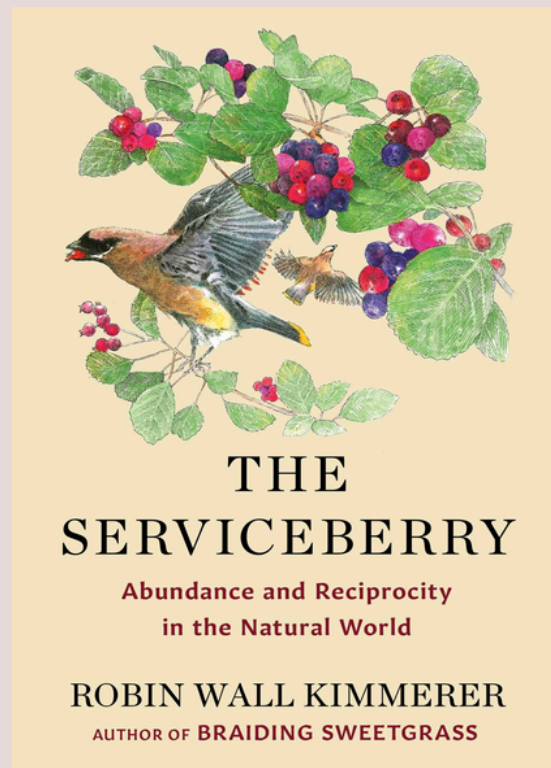
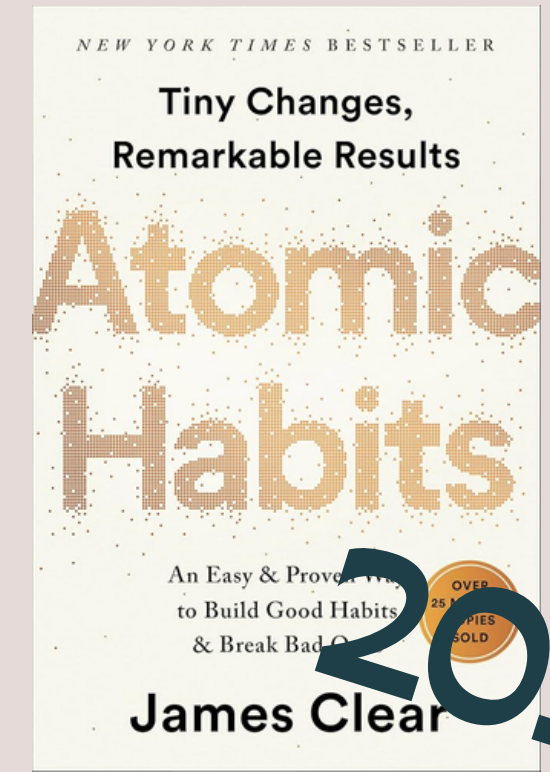
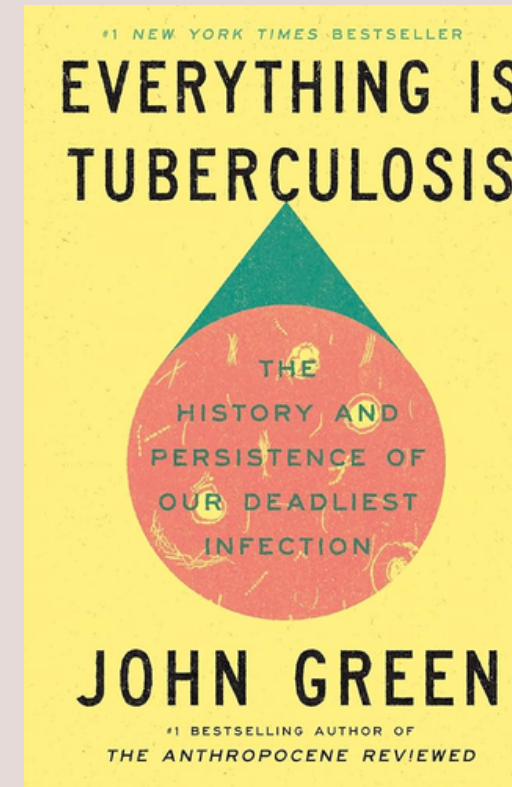
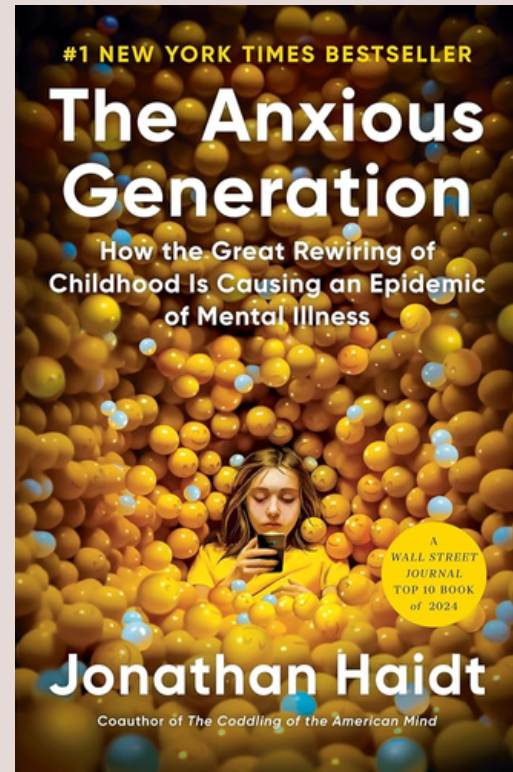
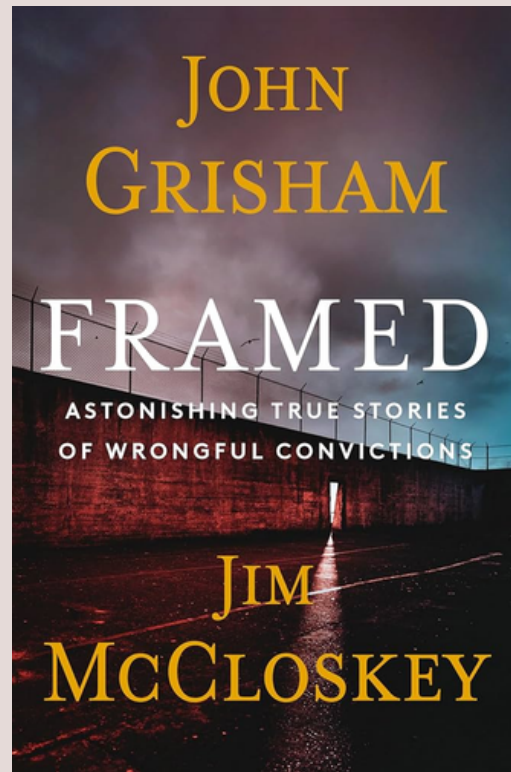




# Adult Nonfiction Top 10

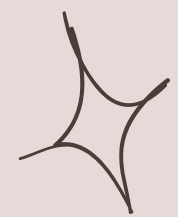
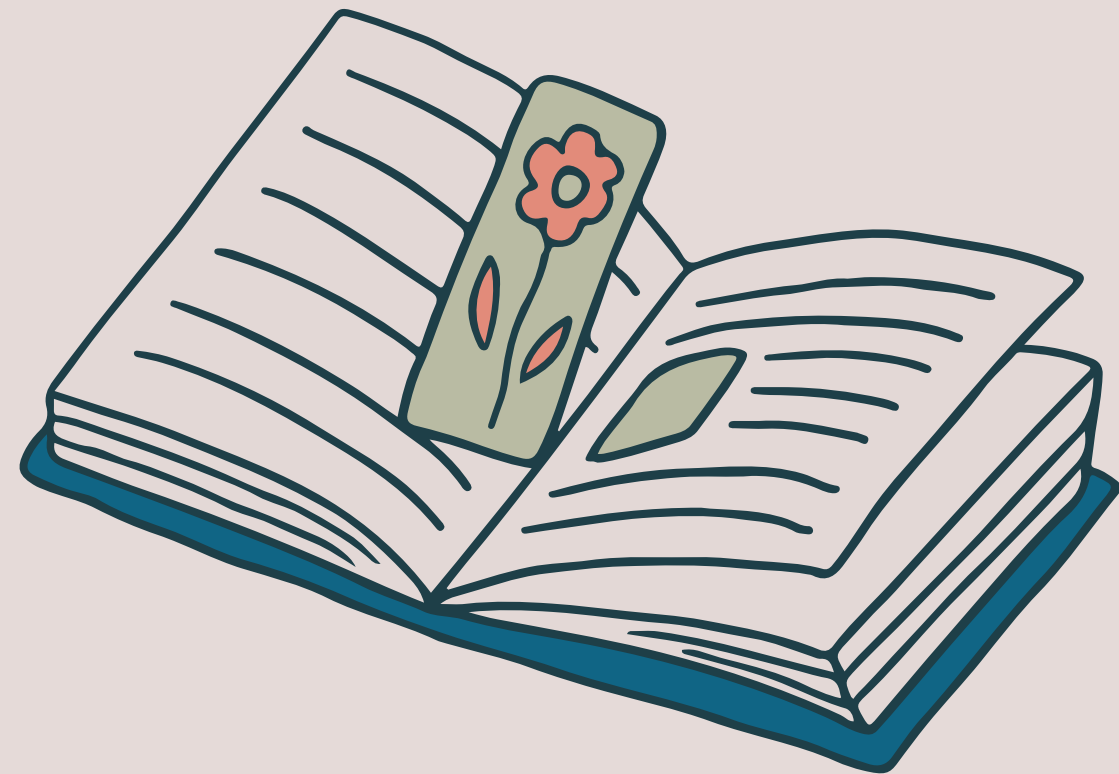


2018!

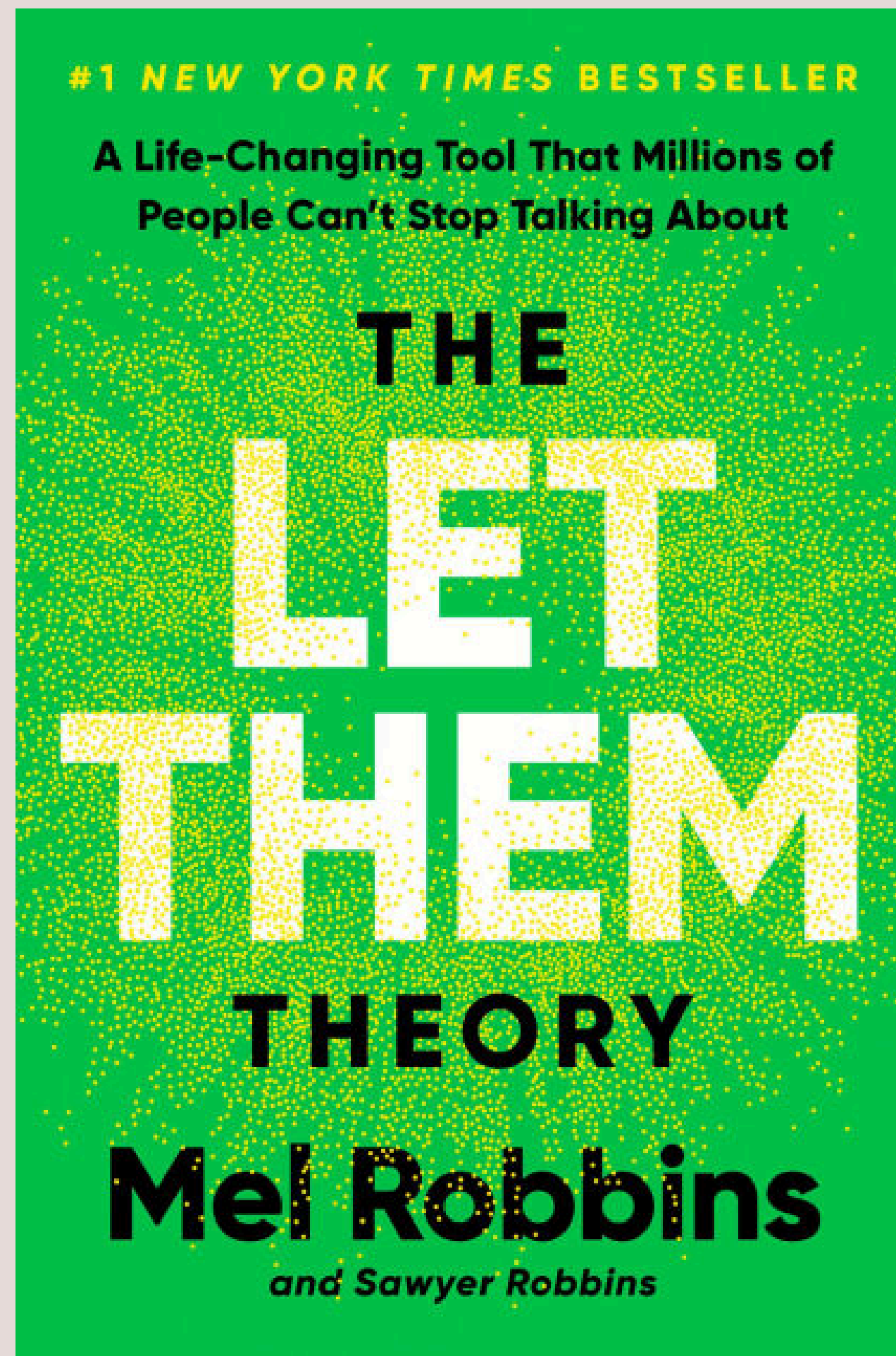




# Adult Nonfiction

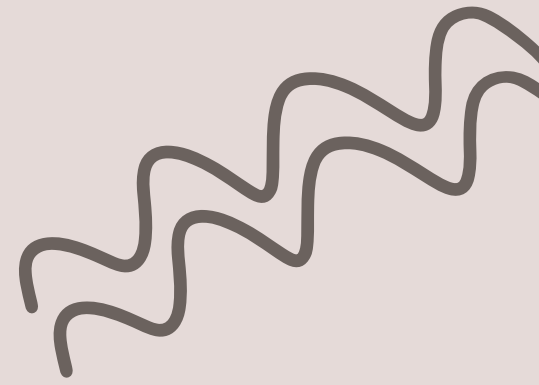


The only nonfiction title  
to outpace some of the  
fiction top 10!

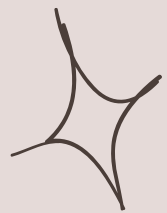




# Juvenile Author Top 10



- Aaron Blabey
- Dan Gutman
- Dav Pilkey
- Eric Carle
- James Dean
- Jeff Kinney
- Kim Dean
- Lincoln Peirce
- Mary Pope Osborne
- Mo Willems



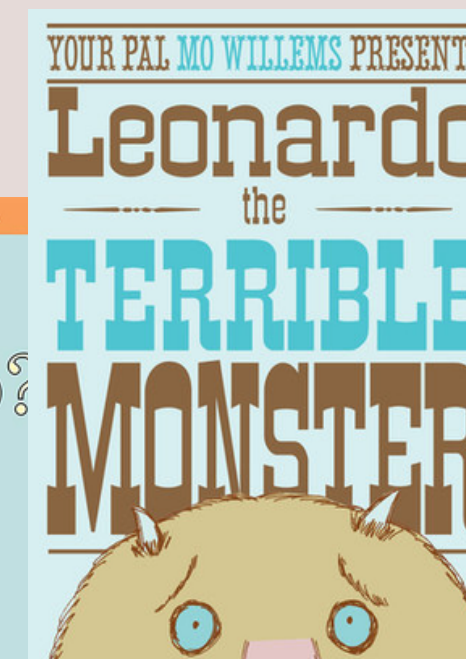


# Juvenile Author ✨



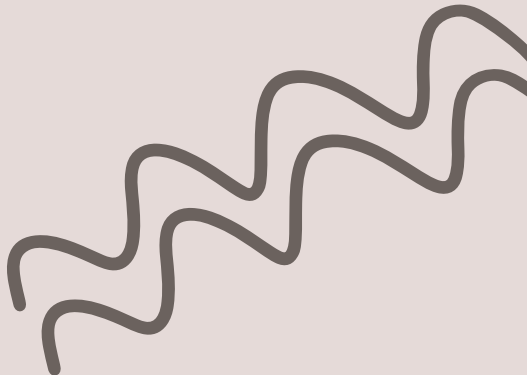
Nearly **250**  
checkouts/renewals  
per day!

## Mo Willems! (again)



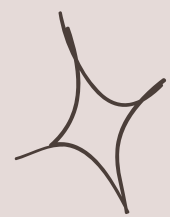
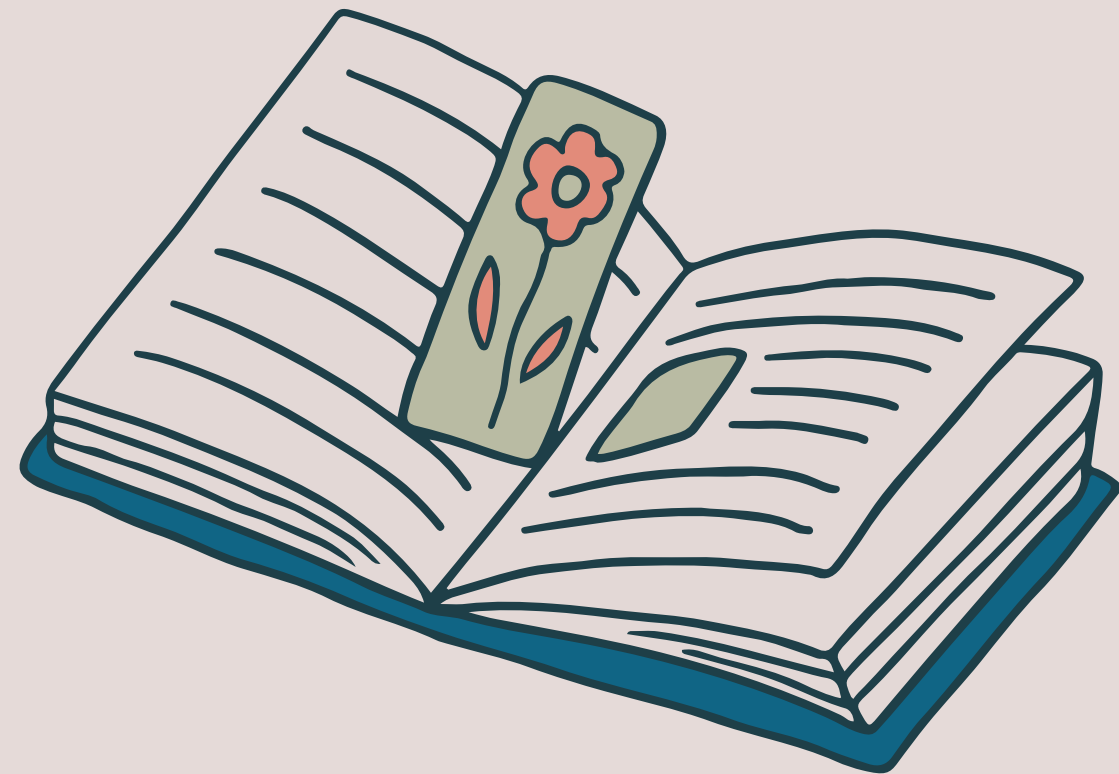


# Blu-ray/DVD Top 10





# Blu-ray / DVD



“I know about popular.”



# 2025 Statistics





# Patrons

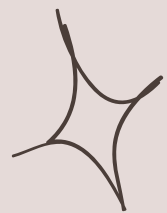


User Records Added: 82,524

788,528 total users

Online Registration: 5,491 (7%, 15% since launch)

School District Partnerships: 1,505 (2%)







Our new patrons could fill Wrigley  
Field... twice!



# Catalog



New Catalog Records: 59,465

1,382,806 total records

New Items: 564,838

7,210,075 total items

Records Overlayed: 60,348





# Circulation ✨

Checkouts: 6,864,705

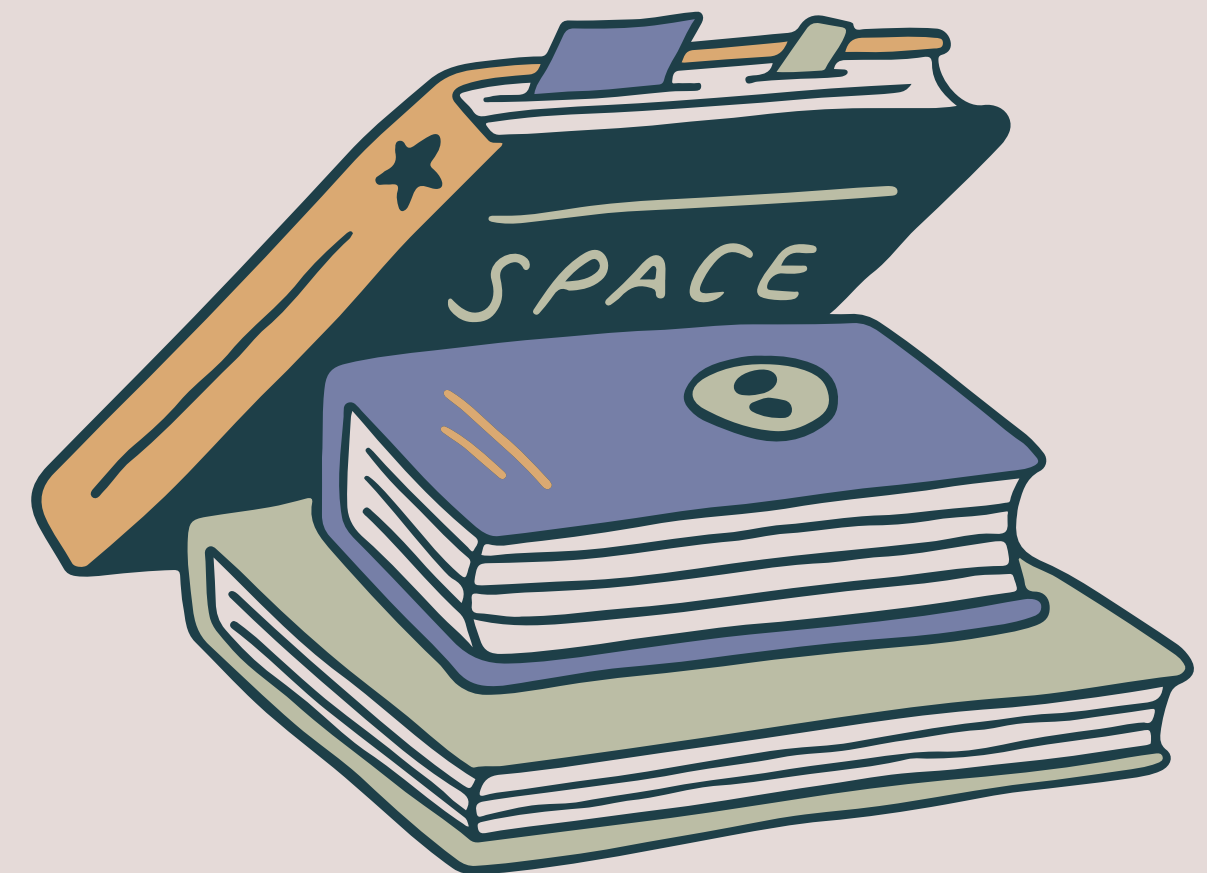
(17% Reciprocal, 3% non-SWAN)

ILL in SWAN: 1,250,714

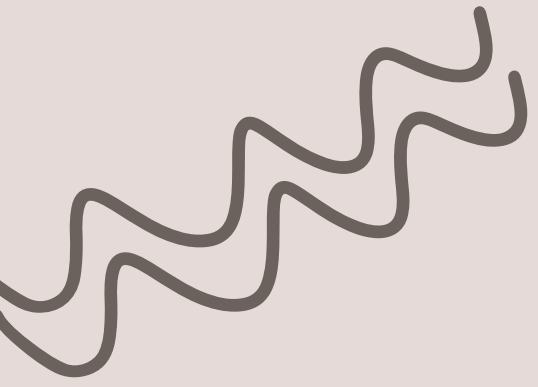
ILL Outside SWAN: 42,112

Holds Placed: 2,279,863

80% pick-up rate

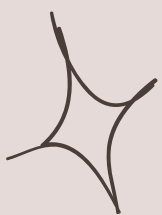






**That's 13 books a minute...**

**...if we assume libraries never close  
and librarians never sleep.**





## e-Resources

**Highest Use Statewide Database:**

Points of View Reference Source

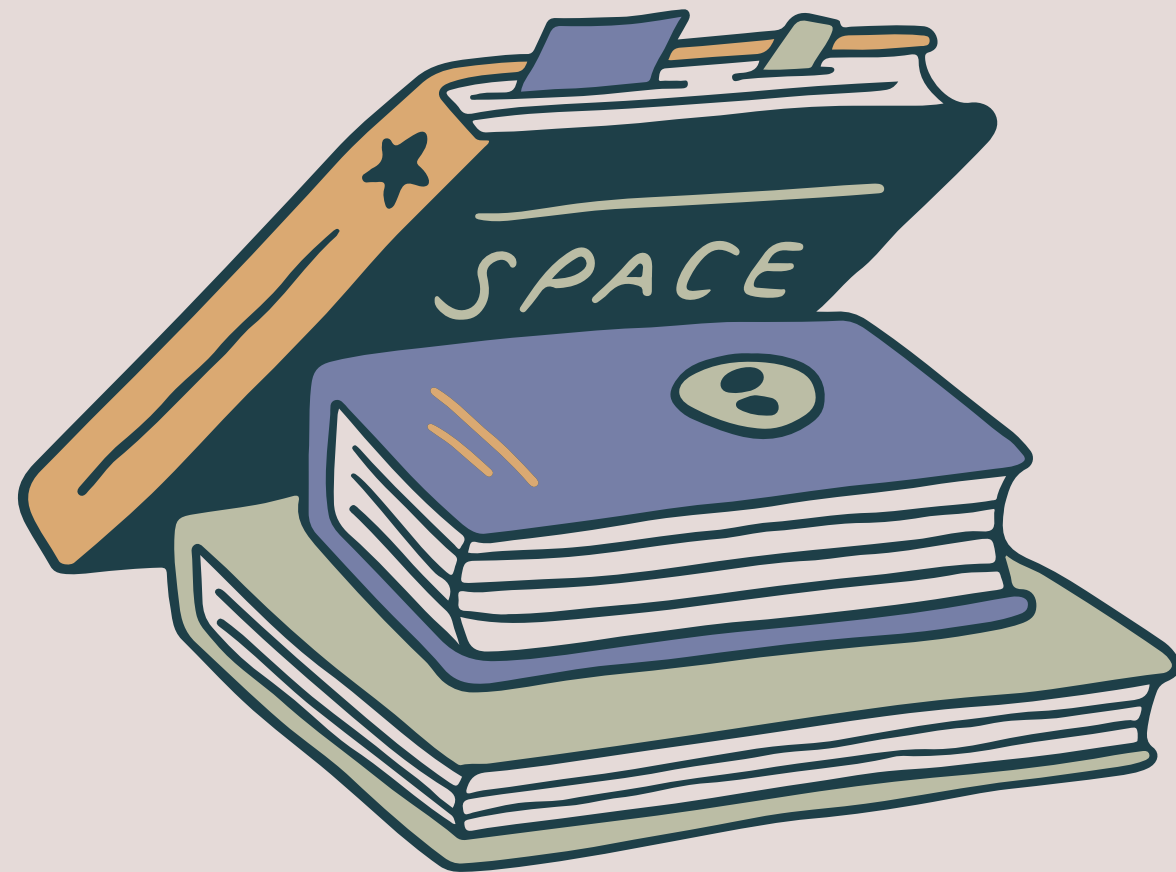
**Highest Use Paid Database:**

Novelist Plus

**Top Search Term Using EDS API:**

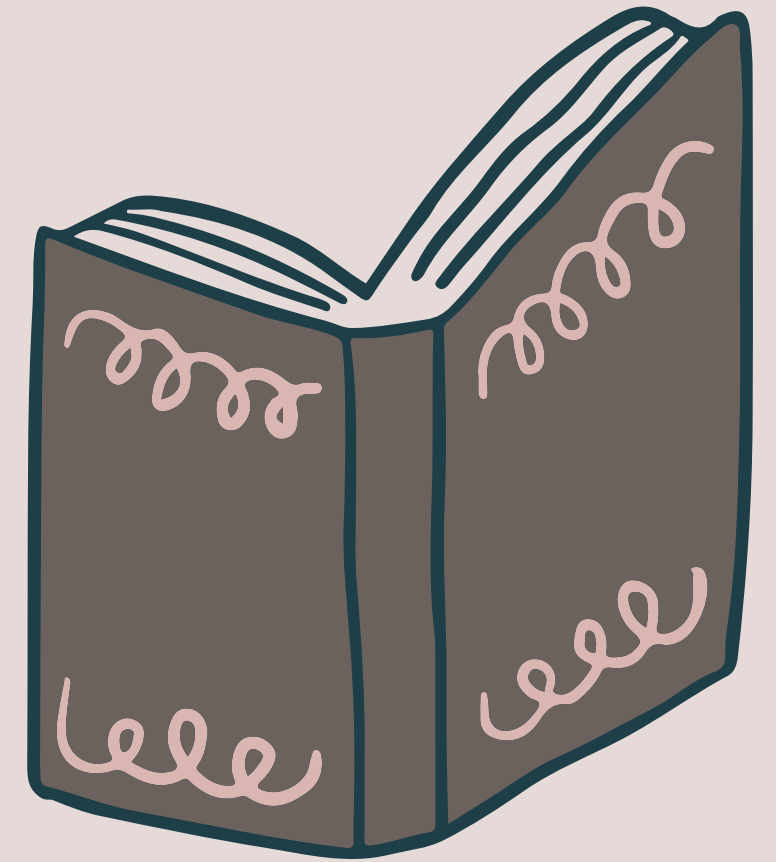
dog





# SWAN Projects


A look back at some of the things we worked  
on last year.



# Aspen Discovery

- Series Pages
- Library of Things scoping
- Changing support vendors

Hide Covers ☐




1) **Dog Man**

Author [Pilkey, Dav](#)  
Volume 1  
Earliest Publication Date 2016

[Graphic Novel](#) [On Shelf](#) [Place Hold](#)  
[Show Edition](#) [Where is it?](#)

George and Harold create a new comic book hero in Dog Man, a crimefighter with the head of a police dog and the body of a policeman, who faces off against his archnemesis Petey the cat.

[More Info](#) [Add to List](#)



2) **Dog Man unleashed**

Author [Pilkey, Dav](#)  
Volume 2  
Earliest Publication Date 2016

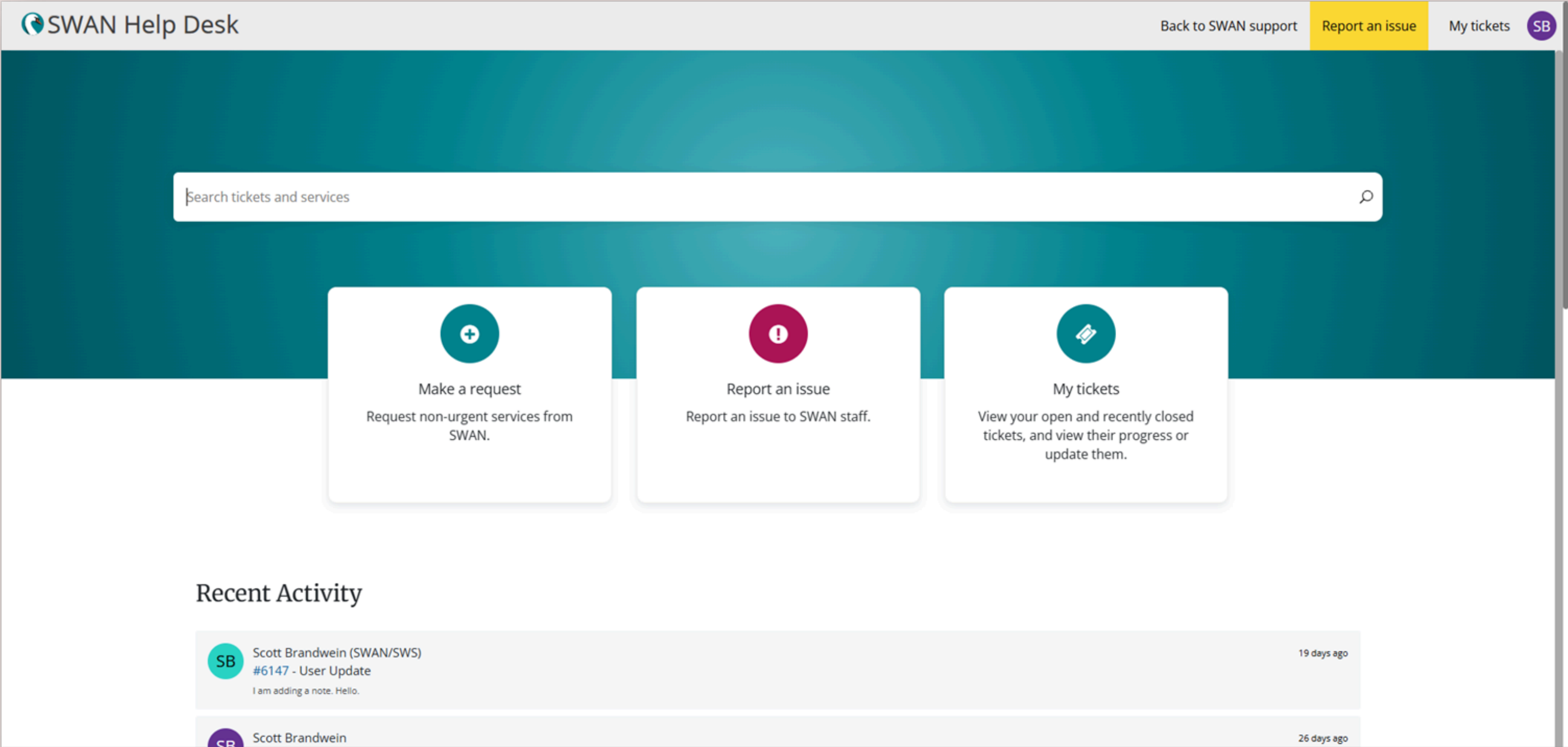
[Graphic Novel](#) [On Shelf](#) [Place Hold](#)  
[Show Edition](#) [Where is it?](#)

Dog Man, a crimefighter with the head of a police dog and the body of a policeman, faces off against his archnemesis Petey the cat.

[More Info](#) [Add to List](#)



# New Help Desk



# Single Sign-on

- Forums
- Help Desk
- Support Site



Hello Scott

Please enter your password below:



Password

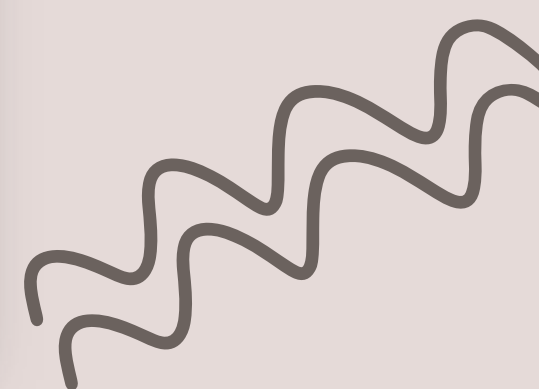


**Sign On**

Sign On with L2

Forgot Password

Not you? Switch Accounts





# Online Patron Registration



## Get a Card [Bookmark](#)

[View](#)[Edit](#)[Outline](#)[Delete](#)[Add another](#)[Revisions](#)

Sign up for a library card to access books, movies, online resources, and more.

By registering for a card, you agree to all the terms and conditions.

I understand I am responsible for this card and all materials checked out on this card until this card is reported lost or missing. I am further responsible for any charges that may result from late return, loss, or damage of materials borrowed.

[Register an adult](#)[Register a child](#)

Complete the information below to apply for a card.

Email Address \*

First Name \*

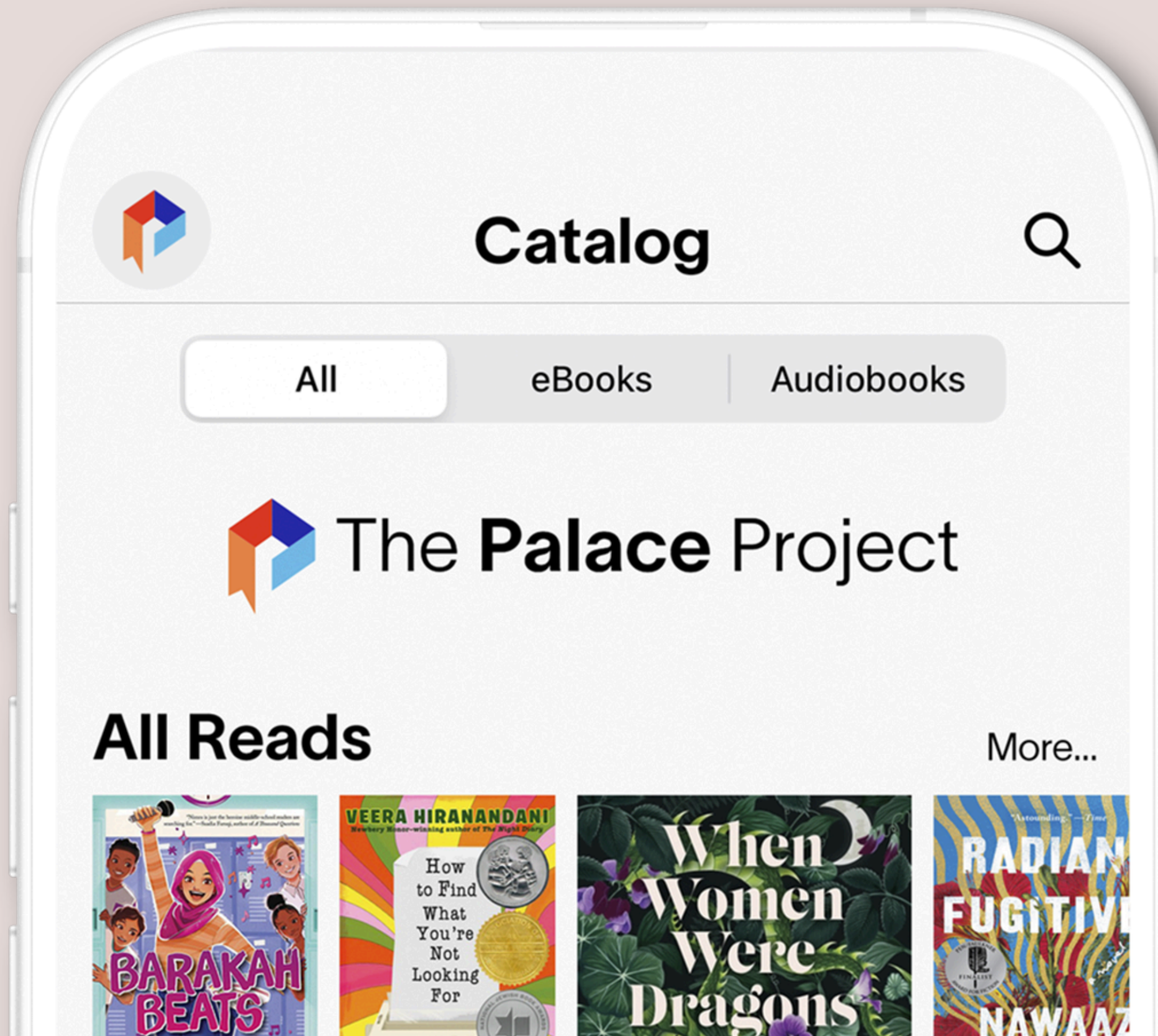
Middle Name

Last Name \*

Address \*

Residential address required, PO BOX not accepted

# Palace Project (and goodbye to B&T)





# MobileStaff Kits



# Cybersecurity Assessment



- Continued partnerships
- Ongoing internal assessment against detailed security standards
- Hiring of Network Security Administrator



# Looking forward

- Environmental Scan Task Force
- Strategic Planning
- The future of SWAN's platform

