



SWAN Budget Fiscal Year 2027

July 1, 2026 – June 30, 2027

SWAN Budget Information & Guidelines

Fiscal Year 2027 (July 1, 2026 – June 30, 2027)

Introduction

The SWAN budget is introduced to the SWAN Board at its November meeting, with scheduled input from library directors at a February Committee of the Whole meeting, and concluding with a membership approval at the March SWAN Quarterly meeting.

Budget Highlights

RAILS Grant revenue increase

The RAILS LLSAP grant increased from \$501,394 to \$515,768 for FY27, which is a \$14,374.50 increase.

Group purchases for EBSCO & Comics Plus removed

These purchases once under SWAN have since moved to an arrangement with RAILS. RAILS now manages the subscription request modifications, fees, and billing. These purchases had no impact on membership fees overall, as the expense and subsequent revenue from direct billing of libraries would zero out.

Increase Library Services Platform expenses

The SirsiDynix agreement would enter its second and final year with a 6.9% increase. Aspen hosting and support is assumed to not increase from the prior year, but additional Aspen/mobile app software development of \$10,000 is included in the FY27. The online patron registration service expense is based on actual three months of usage.

Increase outside consulting expense

The consulting budget includes an increase of \$10,000 to provide SWAN consulting for procurement and RFP management should it be decided to procure a new integrated library system (ILS).

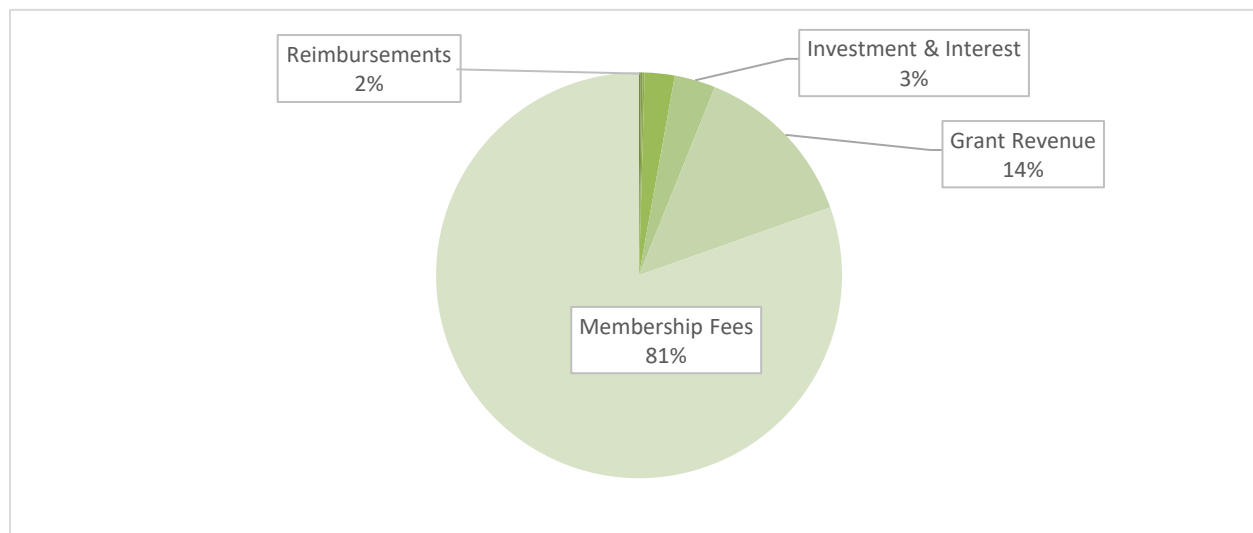
Increase to cyber risk policy coverage expense

The information security risks are increasing for all organizations, and libraries are no longer outside of the threat vector for cyber criminals (see the British Library ransomware attack). The insurance coverage for SWAN is currently \$1 million and if raised to \$2 million in coverage would raise the annual premium from \$6,191 to \$8,489. SWAN also has a cyber risk warranty with our security provider Arctic Wolf which provides coverage up to \$750,000.

Membership fees increase

Overall, the FY27 budget would set an increase of 4.0% to membership fees.

Revenue



Membership Fees

4010 SWAN Full Membership Fees \$3,073,186

SWAN assesses membership fees based on academic, school, special, and public library. The formulas used for each are detailed on the SWAN support site under About > Board > Budget & Fees. SWAN's FY27 membership fees are based on the 2023 tax year, and the variations of the tax revenue and debt service per library will result in individual library fee changes.

4011 SWAN Internet Access Membership Fees \$4,200

The Internet Access level service for school libraries continues through this fiscal year with 10 schools participating with partner SWAN member public libraries.

Membership Reimbursements

4110 Member One-Time Project Receipts \$0

This budget line would be used if a library needed to reimburse SWAN for one-time expenses incurred. For example, if the RAILS Catalog Grant were no longer available, a library joining SWAN would pay SWAN for the one-time expenses for the vendor expenses. No one-time projects are anticipated for this budget.

4190 Member Group Purchase Receipts \$5,600

Libraries that reimburse SWAN for group purchases are indicated in this budget line. EBSCO and Comics Plus group purchase revenue prior to FY27 were recorded in this line.

Reimbursements

4220	Reimbursement Losses for Resource Sharing	\$47,800
-------------	--	-----------------

Revenue associated with reimbursement for ILL or reciprocal borrowing with libraries outside of the SWAN consortium, e.g. Chicago Public Library.

4230	Collection Agency Fees	\$0
-------------	-------------------------------	------------

SWAN may collect a modest fee for administering services within the Unique Management collection of unpaid reciprocal borrower invoices. This budget no longer includes the revenue.

4240	E-commerce transactions	\$43,400
-------------	--------------------------------	-----------------

Payments made through the Aspen Discovery catalog by library users will be recorded as revenue and then distributed back to member libraries as an expense off-set in this budget.

4250	Deaccession transactions	\$0
-------------	---------------------------------	------------

Revenue collected from deaccession of SWAN equipment or furniture.

Grant Revenue

4310	RAILS Support to SWAN	\$515,768
-------------	------------------------------	------------------

RAILS provides support to SWAN through an annual grant to support regional resource sharing. The grant amount to SWAN is divided equally between all public libraries and is indicated as a discount off SWAN membership fees. The funding from RAILS is based on a formula which divides a grant \$2.25 million between six entities known as LLSAPs.

4320	Other Grant Revenue	\$0
-------------	----------------------------	------------

Revenue received as part of the addition of a new library to SWAN will be recorded in this budget line. No joining libraries are planned for this budget year.

Registration & Event Receipts

4499	Annual Conference Receipts	\$6,260
-------------	-----------------------------------	----------------

Any revenue collected as part of the SWAN Expo are recorded in this budget line. This includes vendor table fees or libraries invoices for the event to offset event catering. This budget includes the annual conference event.

Investment & Interest

4510	Interest Income	\$100,000
-------------	------------------------	------------------

SWAN interest income is generated from a Money Market account with interest rates adjusting based on financial markets. The rates over the past year have been steadily increasing, and this budget anticipates a higher yield than last year's budget.

4520 Investment Income \$25,000

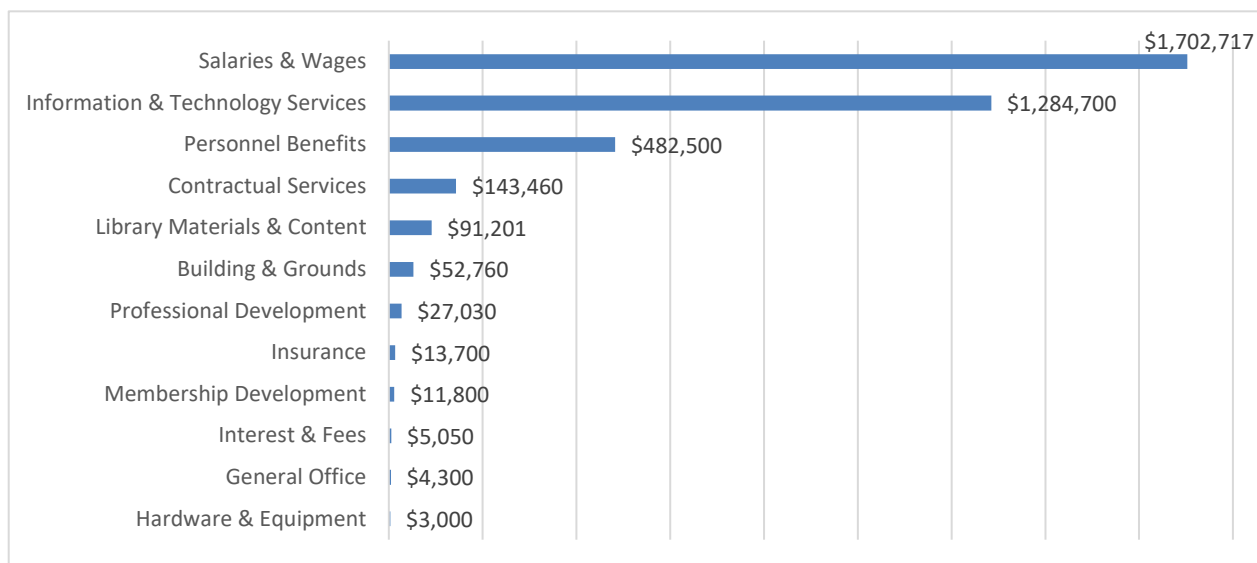
SWAN currently is a member of IMET. The annual income is recorded in this budget revenue line.

Reserves Funding

4600 Reserves Funding \$5,064

The reserve fund for SWAN is tracked on the monthly finance report as unrestricted funds. The use of the excess operating fund is recommended for one-time expenses for the consortia, such as the addition of a new service that has one-time setup fees. This budget includes a one-time expense for add-on software to improve BLUEcloud Analytics.

Expenses



Salaries & Wages

5000 Salaries & Wages \$1,702,717

This year that this budget line is increased 4.0%, which allows for SWAN's merit process and salary increases.

Personnel Benefits

5021 Social Security Taxes \$115,000

Payroll taxes and fringe benefits-- employer's share only.

5022 State Unemployment Insurance \$0

Organization pays unemployment directly should it be required.

5023	Worker's Compensation	\$3,900
------	-----------------------	---------

Organization insurance provided by insurance vendor.

5024	Retirement Benefits	\$167,100
------	---------------------	-----------

SWAN provides its employees a 401a retirement plan through ICMA-RC. The organization does not provide a defined benefit plan or participate in Illinois Municipal Retirement Fund (IMRF).

5025	Health, Dental, Life And Disability Insurance	\$195,000
------	---	-----------

Employee health insurance is provided by LIMRiCC Purchase of Health Insurance Program (PHIP). This budget reflects the 2026 open enrollment changes with employee benefit selections.

5026	Tuition Reimbursements	\$1.100
------	------------------------	---------

Tuition reimbursement benefit for employees.

5085	Staff Wellness	\$400
------	----------------	-------

Benefit offered to SWAN employees for participation within the employee Wellness Plan which includes incentives for breaktimes for walking, pedometers, exercise, and healthy lifestyles. No change from the prior budget.

Building & Grounds

SWAN headquarters relocated in December 2024, and the operating expenses have decreased significantly in the smaller, new location.

5110	Rent/Lease	\$50,600
------	------------	----------

SWAN signed a 7-year lease in 2024 for office space. This budget reflects 12 months of the rent.

5120	Utilities	\$1,200
------	-----------	---------

Office facility electricity expenses are recorded in this line.

5130	Property Insurance	\$0
------	--------------------	-----

Property and flood insurance covers office space furniture and equipment.

5140	Repairs & Maintenance	\$960
------	-----------------------	-------

Used for facility repairs including door fob security maintenance and repairs.

5150	Custodial Service & Supplies	\$0
-------------	---	------------

Cleaning service is provided as part of the office lease.

5190	Other Building Maintenance	\$0
-------------	-----------------------------------	------------

Used for alarms and security cameras related to facility expense.

Professional Development

This budget category focuses on providing professional development for SWAN employees. This includes training, conferences, and travel.

5210	Conference Travel	\$10,000
-------------	--------------------------	-----------------

SWAN staff attend various conferences annually such as ILA, COSUGI, ALA, or the COSUGI Consortia Special Interest Group meeting. This includes expenditures for overnight lodging, fares for airfare, planes, trains, taxicabs, auto rental, meals, etc. There is planned conference travel in this 'budget.

5220	Staff Meetings	\$900
-------------	-----------------------	--------------

Expenses related to SWAN staff meetings, mostly food and a holiday luncheon, are recorded in this line.

5230	Staff Professional Development	\$7,000
-------------	---------------------------------------	----------------

SWAN employees participate in presentations at ILA, ALA, COSUGI and other professional organization events. Attending the annual COSUGI conference is a must for SWAN staff as it allows the organization to plan for upcoming library software features and functions.

5240	Professional Association Membership Dues	\$1,300
-------------	---	----------------

SWAN employees participate in ALA, ILA, and COSUGI activities, often presenting at conferences. Individual

5250	Educational Material	\$800
-------------	-----------------------------	--------------

This budget reduces some of the online learning expenses for employees.

5260	Online Learning	\$7,030
-------------	------------------------	----------------

SWAN employee training and courses on best security practice, identifying and preventing phishing attempts, and training as required by law.

Membership Development

This budget category focuses on providing professional development for the member libraries within SWAN. This includes SWAN staff consulting, leading meetings, and facilitating membership networking events.

5310	Travel Reimbursement	\$2,000
-------------	-----------------------------	----------------

The SWAN organization has no vehicles and reimburses employees for mileage attending the 50+ membership meetings held annually. Travel expenses are reduced for the budget due to the pandemic, but some mileage reimbursement will occur.

5320	Membership Meetings	\$300
------	---------------------	-------

Refreshments for the 50+ membership advisory and user group meetings held annually, such as coffee and donuts, or other activity supplies. Reduced to zero for the budget post-pandemic.

5330	Library Professional Development	\$9,500
-------------	---	----------------

Subscription expenses for learning management system and online tutorial coursework. Library staff have the ability to complete interactive training and within the learning management system, complete courses to master skills in the software systems SWAN provides. Expenses include Articulate Storyline, and Inquisiq, which are components of SWAN's Learning Management System.

5350	Marketing & Promotional Material	\$0
------	----------------------------------	-----

Expenses related to printing library promotional material such as bookmarks or brochures.

5399	Annual Conference	\$0
------	-------------------	-----

SWAN’s annual conference, called SWAN Expo, supports speaker fees, honorarium, and travel expense for speakers. Costs associated with the facility and event are noted with the budget lines ending in “99” within this budget chart of accounts.

Information & Technology Services

This budget category includes technology expenses related to SWAN's resource sharing platform. The platform includes expenses related to the technology required to run the platform for library content within the consortium.

5420	Application Software Licensing	\$16,800
------	--------------------------------	----------

Expenses related to SWAN's support software application include employee tools to create videos, deploy client software, design presentations, run meetings, and create instructional material. Vendor licensing includes: Formsite (webform software subscription), SurveyMonkey (for ongoing usability Input), MailChimp for e-newsletter, Adobe Acrobat, Adobe Creative Suite, Asana, Articulate Storyline, LastPass, Microsoft Office O365, Microsoft Visio Pro O365, Panda Virus Protection & Patch Management, and MSI Package Installer.

5430	Server Software Licensing	\$129,000
------	---------------------------	-----------

Expenses related to SWAN's support infrastructure including SSL Certificates for SWAN, domain subscription, SonicWALL Security licensing and subscription, Microsoft Active Directory, Microsoft Azure, and Microsoft Server licenses. This budget includes shift in expenses for SWAN hosting Aspen in Microsoft Azure as that service is helpdesk system hosting. The server licensing expenses related to SWAN's library services platform to run SirsiDynix Symphony and test systems. The single sign-on service was added in 2023, which will simplify library staff access to SWAN's growing web-based platforms, as well as providing enhanced security through management of users with this identify service provider.

5440	Library Services Platform	\$1,049,700
<p>The heart of SWAN's resource sharing software platform expenses is recorded in this budget line, including expenses from SirsiDynix, OCLC, and EBSCO Discovery Services, OpenAthens, and now Patron Point/SpringShare providing online patron registration. Annual expenses for products are the following: SirsiDynix \$415,575; OCLC for all SWAN members \$318,848; EBSCO Discovery Service Web Services \$131,531; OpenAthens proxy authentication service \$71,933; Aspen Discovery & LiDA mobile with Grove \$92,600; online patron registration with Springshare Patron Point \$10,252; SirsiDynix add-on BLUEcloud Analytics Private Intelligence Server \$6,900.</p>		
5450	Data Management Services	\$35,100
<p>Expenses related to maintaining bibliographic and user data within the SWAN library services platform. This includes software provided to cataloging libraries to maintain bibliographic standards of the consortium. Vendors expenses include: ALA RDA Toolkit for Cataloging Libraries, WebDewey (OCLC negotiated directly with SWAN), and BackStage Library Works (ongoing authority updates). The National Change of Address (NCOA) is processed annually with Unique Management which updates the patron database address data and includes GIS map coordinates based on address.</p>		
5460	Information Subscription Service	\$21,800
<p>SWAN's discovery platform includes ProQuest Syndetic Ubound services to add cover artwork and reading recommendations.</p>		
5470	Subscription Support Services	\$25,200
<p>SWAN's support platform includes virtual meeting hosting for all governance and user groups, remote desktop assistance to library staff, and remote monitoring of systems for SWAN on-call staff. Expenses associated with this budget line include: Zoom virtual meeting platform, StatusCake (for site monitoring and alerting SWAN staff to outages), and the volume email service through SendGrid (patron notification plus library notification).</p>		
5480	Telecommunications	\$7,100
<p>Expenses associated with SWAN facility connection to the internet and phone support were reduced due to the office relocation.</p>		
5490	Group Purchases - Services	\$2,600
<p>SWAN will periodically arrange a software group purchase. Those expenses are recorded here if libraries are invoiced back for the expense, which would be recorded as revenue in the budget line 4190. The budget is supporting an ongoing Envisionware software group purchase for a self-check system, which has annual maintenance for support.</p>		

General Office

This category is primarily the expenses associated with running the organization's headquarters at 915 Harger Drive, Suite 260, Oak Brook, Illinois.

5510	Office Supplies	\$3,500
-------------	------------------------	----------------

Expenses associated with routine office work including paper, staff supplies, and anything costing less than \$5,000.

5520	Postage	\$800
-------------	----------------	--------------

Expenses associated with shipping printed material are recorded in this line. SWAN staff make best attempts to control shipping costs through bringing printed material to membership events.

5550	Furniture	\$0
-------------	------------------	------------

If SWAN needs to add any training or collaboration furniture for the facility conference room or work areas, this is the budget and expense is recorded.

5599	Annual Conference Supplies	\$0
-------------	-----------------------------------	------------

All supply expenses associated with the annual conference SWAN Expo which include envelopes, paper, and presentations. SWAN Expo will take place this fiscal year.

Hardware & Equipment

SWAN utilizes a very light footprint for its headquarters, staff, and services to libraries.

5610	Equipment Rental/Maintenance	\$0
-------------	-------------------------------------	------------

All expenses associated with equipment leased at SWAN's office, including the single staff multi-use copier printer. This lease was discontinued in FY25.

5620	Hardware	\$0
-------------	-----------------	------------

Expenses for this budget related to SWAN staff computer equipment replacement, to be funded with SWAN excess cash reserves.

5690	Group Purchases - Hardware	\$3,000
-------------	-----------------------------------	----------------

Any pass-through purchases for equipment required for membership, such as firewall, commerce, or print solutions required by SWAN.

Insurance

SWAN organization insurance includes insuring the SWAN governing board, facility, and business for risk of crime and cybercrime.

5700	Insurance	\$13,700
-------------	------------------	-----------------

The SWAN organization insurance for directors and officers, cyber crime, and business owner's insurance.

Contractual Services

The SWAN organization contracts with various companies for services such as a law firm for legal opinions, accounting services, financial audit, payroll, and notification services for library users.

5810	Legal	\$6,000
-------------	--------------	----------------

SWAN utilizes legal services with Klein, Thorpe, Jenkins for various activities and inquiries as they arise during the year.

5820	Accounting	\$22,060
-------------	-------------------	-----------------

Expenses associated with activities include SWAN annual audit, and the accounting service with Lauterbach & Amen.

5830	Consulting	\$12,800
-------------	-------------------	-----------------

Expenses for vendor consulting for facilitation, strategic planning, or other one-time services are recorded in this budget line. This budget includes one-time expenses for paid software development to ByWater Solutions for prioritizing Aspen LiDA feature requests from SWAN.

5840	Payroll Service Fees	\$4,600
-------------	-----------------------------	----------------

Expenses for the payroll service provided through Paylocity.

5850	Contractual Agreements	\$0
-------------	-------------------------------	------------

Expenses for one-time costs within the fiscal year for adding member libraries to the consortium are recorded in this line. These expenses would be offset by the revenue line 4320 Other Grant Revenue.

5860	Notification & Collection	\$85,900
-------------	--------------------------------------	-----------------

This budget includes the new service for all 100 member libraries to have email and SMS messages enhanced and sent through the MessageBee service provided by Unique Management. All 100 library notifications sent via automated phone calls are also provided through MessageBee. SWAN has also contracted with a Unique Management to print all user notices at \$4,092 annually.

5870	Recruitment	\$0
-------------	--------------------	------------

Costs for personnel search, advertising of an open position at SWAN.

5899	Annual Conference Facility Contract	\$12,100
-------------	--	-----------------

SWAN Expo at Moraine Valley Community College Business and Conference Center has a one-day cost for the location plus food provided for the event. This budget has included the facility rental at the Business and Conference Center, based on the amount paid last year for the event.

Library Materials & Content

SWAN's chart of accounts includes budget lines for the organization to provide content to libraries—be it print, electronic, or as a group purchase pass-through.

5910	Print Materials	\$0
-------------	------------------------	------------

This line is intended to supplement printing services for promotional material or print collections supplied to member libraries.

5920	Reimbursement for Resource Sharing	\$47,800
-------------	---	-----------------

Expenses related to the SWAN member libraries centralized reimbursement of unreturned material. The expenses in this line are offset by revenue in the 4220 Reimbursement Losses for Resource Sharing line.

5930	Group Purchases - Content	\$0
-------------	----------------------------------	------------

This line's purpose is for online content provided to all libraries as part of SWAN's membership fees. It may include eBook content, online databases subscriptions, or other e-content.

5940	E-commerce payment transactions	\$43,401
-------------	--	-----------------

Expenses related to the Aspen Discovery online payments through PayPal. Library payments will be collected in the revenue budget line 4240 and quarterly reconciliation and payments back to the libraries are recorded in this budget line.

5990	Group Purchases - Electronic Resources	\$0
-------------	---	------------

SWAN negotiated group purchase for online subscriptions would be recorded in this line. The associated revenue offset in the revenue 4190 budget line. Prior expenses included the EBSCO subscription database group-purchase and Comics Plus.

Interest & Fees

6010	Bank Fees	\$5,000
-------------	------------------	----------------

Expenses associated with bank fees for stopping checks or other services are recorded in this line. The banking service for lock box deposits is included in this budget line.

6020	Merchant Account Fees	\$50
-------------	------------------------------	-------------

SWAN subscribes to ProPay as part of the BLUEcloud Commerce required for online Enterprise payments. SWAN pays \$40 annually, as do all member libraries within the ProPay service.

6030	Interest Payment	\$0
-------------	-------------------------	------------

Expenses for any loan or debt service payments would be recorded in this line. SWAN currently has no expenses for this line.

6099	Annual Conference Merchant Fees	\$0
-------------	--	------------

Expenses associated with any online transaction fees for processing annual conference SWAN Expo online payments are recorded in this line.

Asset Management

6110	Depreciation	\$1,460
-------------	---------------------	----------------

For proprietary funds and government-wide financial statements only. Depreciation charges are intended to allocate the cost of a fixed asset over the estimated useful life of the unit in a systematic and rational manner using the straight-line method. The number of physical assets depreciated has fallen dramatically since SWAN moved to an infrastructure-as-a-service model and no longer needs to purchase servers over \$5,000. Two expenses are in their final years of depreciation.

6120	(Gain)/Loss on Asset Disposal	\$0
-------------	--------------------------------------	------------

6130	Vacation Expense	\$0
-------------	-------------------------	------------

Per GASB, Vacation Expense is the account created to segregate the amount of the expense incurred by SWAN for the current years' addition or subtraction to the balance of earned but unused staff vacation time. This expense from budget in prior years was deemed no longer required for SWAN.

SWAN Budget Summary

SWAN Budget	FY27 Budget
4000 Membership Fees	\$3,077,386
4100 Membership Reimbursements	\$5,600
4200 Reimbursements	\$91,200
4300 Grant Revenue	\$515,768
4400 Registration & Event Receipts	\$6,260
4500 Investment & Interest	\$125,000
4600 Reserves Funding	\$5,064
Total Revenue	\$3,826,278
5000 Salaries & Wages	\$1,702,717
5020 Personnel Benefits	\$482,500
5100 Building & Grounds	\$52,760
5200 Professional Development	\$27,030
5300 Membership Development	\$11,800
5400 Information & Technology Services	\$1,284,700
5500 General Office	\$4,300
5600 Hardware & Equipment	\$3,000
5700 Insurance	\$13,700
5800 Contractual Services	\$143,460
5900 Library Materials & Content	\$91,201
6000 Interest & Fees	\$5,050
Total Operating Expenses	\$3,822,218
6100 Asset Management	\$1,460
Excess of revenues over (under) estimated expenses	\$0

Revenue & Expense Budget		FY25 Actual	FY26 Budget	FY27 Budget	Change from FY26 to FY27
Revenue					
4000	Membership Fees				
4010	SWAN Full Membership Fees	\$2,871,718	\$2,933,139	\$3,073,186	\$140,047
4011	SWAN Internet Access Membership Fees	\$3,714	\$3,700	\$4,200	\$500
4100	Membership Reimbursements				
4110	Member One-Time Project Receipts		\$0	\$0	\$0
4190	Member Group Purchase Receipts	\$301,672	\$301,600	\$5,600	(\$296,000)
4200	Reimbursements				
4220	Reimbursement Losses for Resource Sharing	\$44,985	\$42,000	\$47,800	\$5,800
4230	Collection Agency Fees		\$0	\$0	\$0
4240	E-commerce transactions	\$40,181	\$43,400	\$43,400	\$0
4250	Deaccession transactions				
4300	Grant Revenue				
4310	RAILS Support to SWAN	\$500,616	\$501,394	\$515,768	\$14,374
4320	Other Grant Revenue		\$0	\$0	\$0
4400	Registration & Event Receipts				
4499	Annual Conference Receipts	\$7,630	\$6,260	\$6,260	\$0
4500	Investment & Interest				
4510	Interest Income	\$102,036	\$85,000	\$100,000	\$15,000
4520	Investment Income		\$21,000	\$25,000	\$4,000
4600	Reserves Funding		\$45,000	\$5,064	(\$39,936)
Total Revenue		\$3,872,550	\$3,982,493	\$3,826,278	(\$156,215)
Expenses					
5000	Salaries & Wages	\$1,489,915	\$1,639,608	\$1,702,717	\$63,109
5020	Personnel Benefits				
5021	Social Security Taxes	\$110,313	\$125,600	\$115,000	(\$10,600)
5022	State Unemployment Insurance	\$0	\$0	\$0	\$0
5023	Worker's Compensation	\$0	\$4,700	\$3,900	(\$800)
5024	Retirement Benefits	\$147,105	\$138,300	\$167,100	\$28,800
5025	Health, Dental, Life And Disability Insurance	\$183,403	\$178,600	\$195,000	\$16,400
5026	Tuition Reimbursements	\$0	\$1,100	\$1,100	\$0
5085	Staff Wellness	\$460	\$400	\$400	\$0
5100	Building & Grounds				
5110	Rent/Lease	\$34,249	\$41,800	\$50,600	\$8,800
5120	Utilities	\$5,107	\$3,800	\$1,200	(\$2,600)
5130	Property Insurance	\$642	\$0	\$0	\$0
5140	Repairs & Maintenance	\$1,860	\$960	\$960	\$0
5150	Custodial Service & Supplies	\$9,620	\$0	\$0	\$0
5190	Other Building Maintenance	\$0	\$0	\$0	\$0

Revenue & Expense Budget		FY25 Actual	FY26 Budget	FY27 Budget	Change from FY26 to FY27
5200	Professional Development				
5210	Conference Travel	\$5,911	\$10,000	\$10,000	\$0
5220	Staff Meetings	\$1,605	\$900	\$900	\$0
5230	Staff Professional Development	\$6,797	\$8,800	\$7,000	(\$1,800)
5240	Professional Association Membership Dues	\$1,248	\$2,500	\$1,300	(\$1,200)
5250	Educational Material	\$0	\$800	\$800	\$0
5260	Online Learning	\$2,030	\$2,500	\$7,030	\$4,530
5300	Membership Development				
5310	Travel Reimbursement	\$1,936	\$900	\$2,000	\$1,100
5320	Membership Meetings	\$80	\$0	\$300	\$300
5330	Library Professional Development	\$4,020	\$8,094	\$9,500	\$1,406
5350	Marketing & Promotional Material	\$0	\$0	\$0	\$0
5399	Annual Conference	\$0	\$2,500	\$0	(\$2,500)
5400	Information & Technology Services				
5420	Application Software Licensing	\$16,332	\$20,300	\$16,800	(\$3,500)
5430	Server Software Licensing	\$141,340	\$118,800	\$129,000	\$10,200
5440	Library Services Platform	\$995,252	\$993,100	\$1,049,700	\$56,600
5450	Data Management Services	\$25,651	\$37,600	\$35,100	(\$2,500)
5460	Information Subscription Service	\$78,866	\$20,400	\$21,800	\$1,400
5470	Subscription Support Services	\$44,616	\$33,800	\$25,200	(\$8,600)
5480	Telecommunications	\$10,160	\$7,500	\$7,100	(\$400)
5490	Group Purchases - Services	\$2,294	\$600	\$2,600	\$2,000
5500	General Office				
5510	Office Supplies	\$2,397	\$3,300	\$3,500	\$200
5520	Postage	\$727	\$800	\$800	\$0
5550	Furniture	\$0	\$0	\$0	\$0
5599	Annual Conference Supplies	\$1,160	\$0	\$0	\$0
5600	Hardware & Equipment				
5610	Equipment Rental/Maintenance	\$0	\$0	\$0	\$0
5620	Hardware	\$1,673	\$45,000	\$0	(\$45,000)
5690	Group Purchases - Hardware	\$0	\$0	\$3,000	\$3,000
					\$0
5700	Insurance	\$13,682	\$10,900	\$13,700	\$2,800
5800	Contractual Services				
5810	Legal	\$118	\$1,500	\$6,000	\$4,500
5820	Accounting	\$21,935	\$22,060	\$22,060	\$0
5830	Consulting	\$10,840	\$1,300	\$12,800	\$11,500
5840	Payroll Service Fees	\$4,540	\$4,600	\$4,600	\$0
5850	Contractual Agreements	\$0	\$0	\$0	\$0
5860	Notification & Collection	\$79,051	\$85,900	\$85,900	\$0
5870	Recruitment	\$0	\$0	\$0	\$0
5899	Annual Conference Facility Contract	\$12,069	\$12,100	\$12,100	\$0
5900	Library Materials & Content				
5910	Print Materials		\$0	\$0	\$0
5920	Reimbursement for Resource Sharing	\$47,738	\$42,000	\$47,800	\$5,800

		FY25	FY26	FY27	Change
		Actual	Budget	Budget	from FY26 to FY27
Revenue & Expense Budget					
5930	Group Purchases - Content		\$0	\$0	\$0
5940	E-commerce payment transactions	\$36,711	\$43,400	\$43,401	\$1
5990	Group Purchases - Electronic Resources	\$296,105	\$301,600	\$0	(\$301,600)
6000	Interest & Fees				
6010	Bank Fees	\$5,544	\$2,560	\$5,000	\$2,440
6020	Merchant Account Fees	\$40	\$50	\$50	\$0
6030	Interest Payment		\$0	\$0	\$0
6099	Annual Conference Merchant Fees		\$0	\$0	\$0
Subtotal Expenses		\$3,855,140	\$3,981,032	\$3,824,818	(\$110,392)
		\$3,855,140			
6100	Asset Management	\$0			
6110	Depreciation		\$1,460	\$1,460	(\$862)
6120	(Gain)/Loss on Asset Disposal				
6130	Vacation Expense				
6140	Miscellaneous Expense				
Total Expenses			\$3,982,492	\$3,826,278	(\$111,254)
Total Revenue (from above)			\$3,982,493	\$3,826,278	
Excess of revenues over (under) estimated expenses			\$1	\$0	

SWAN Reserves Plan: Updated for FY27 Budget

Capital Expenditures	FY25	FY26	FY27	FY28
	July 2024-June 2025	July 2025-June 2026	July 2026-June 2027	July 2027-June 2028
Prior Year Balance: End of fiscal year, final audit, see "Unrestricted" on Balance Sheet	\$2,600,427	\$2,560,427	\$2,515,427	\$2,510,363
Reserves collected & Impact Fee	\$0			
Strategic planning consultant				
Website development consultant				
Single Sign On: Identity service provider one-time	(\$35,000)			
Funds for SWAN office relocation	(\$5,000)			
Funds for SWAN staff computer replacement		(\$45,000)		
BLUEcloud Analytics Private Intelligence Suite one-time expense			(\$5,064)	
Future ILS Migration Budget (\$465,740)				
Total	\$2,560,427	\$2,515,427	\$2,510,363	\$2,510,363
Maintain 4 months operating in reserve (policy)	(\$1,364,582)	(\$1,326,431)	(\$1,263,933)	(\$1,327,129)
Over/(Under) Reserve Policy	\$1,195,845	\$1,188,996	\$1,246,430	\$1,183,233
Operating Budget (5% increases each year after FY26)	\$4,093,746.37	\$3,979,293.38	\$3,791,798.46	\$3,981,388.38
Months operating in reserve	7.51	7.59	7.94	7.57

Chart 1: SWAN Membership Fees
Fiscal Year 2027: July 1, 2026 - June 30, 2027
Draft

SWAN Library	Type	Public Library Base Fee	Public Library Funding Fee	School Library	Special Library
Acorn Public Library District	Public	\$ 18,414	\$ 10,998		
Addison Public Library	Public	\$ 18,414	\$ 50,250		
Alsip-Merrionette Park Public Library District	Public	\$ 18,414	\$ 24,773		
Batavia Public Library District	Public	\$ 18,414	\$ 43,425		
Bedford Park Public Library District	Public	\$ 18,414	\$ 15,610		
Beecher Community Library District	Public	\$ 18,414	\$ 3,048		
Bellwood Public Library	Public	\$ 18,414	\$ 17,924		
Bensenville Community Public Library District	Public	\$ 18,414	\$ 15,918		
Bensenville Elementary School District #2	School			\$ 17,500	
Berkeley Public Library	Public	\$ 18,414	\$ 4,031		
Berwyn Public Library	Public	\$ 18,414	\$ 35,878		
Bloomingtondale Public Library	Public	\$ 18,414	\$ 26,490		
Blue Island Public Library	Public	\$ 18,414	\$ 11,786		
Bridgeview Public Library	Public	\$ 18,414	\$ 9,240		
Broadview Public Library District	Public	\$ 18,414	\$ 11,602		
Brookfield Public Library	Public	\$ 18,414	\$ 19,498		
Calumet City Public Library	Public	\$ 18,414	\$ 12,931		
Calumet Park Public Library	Public	\$ 18,414	\$ 1,721		
Carol Stream Public Library	Public	\$ 18,414	\$ 30,502		
Chicago Heights Public Library	Public	\$ 18,414	\$ 6,726		
Chicago Ridge Public Library	Public	\$ 18,414	\$ 12,624		
Cicero Public Library	Public	\$ 18,414	\$ 15,282		
Clarendon Hills Public Library	Public	\$ 18,414	\$ 7,383		
Crestwood Public Library District	Public	\$ 18,414	\$ 5,682		
Crete Public Library District	Public	\$ 18,414	\$ 17,442		
Dolton Public Library District	Public	\$ 18,414	\$ 8,536		
Downers Grove Public Library	Public	\$ 18,414	\$ 52,135		
Eisenhower Public Library District	Public	\$ 18,414	\$ 38,219		
Elmwood Park Public Library	Public	\$ 18,414	\$ 15,018		
Evergreen Park Public Library	Public	\$ 18,414	\$ 11,809		
Flossmoor Public Library	Public	\$ 18,414	\$ 11,586		
Forest Park Public Library	Public	\$ 18,414	\$ 18,815		
Frankfort Public Library District	Public	\$ 18,414	\$ 25,655		
Franklin Park Public Library District	Public	\$ 18,414	\$ 17,624		
Geneva Public Library District	Public	\$ 18,414	\$ 50,687		
Glen Ellyn Public Library	Public	\$ 18,414	\$ 43,742		
Glenside Public Library District	Public	\$ 18,414	\$ 30,256		
Glenwood-Lynwood Public Library District	Public	\$ 18,414	\$ 12,623		
Grande Prairie Public Library District	Public	\$ 18,414	\$ 13,637		
Green Hills Public Library District	Public	\$ 18,414	\$ 23,240		
Harvey Public Library District	Public	\$ 18,414	\$ 8,935		
Hillside Public Library	Public	\$ 18,414	\$ 13,283		
Hinsdale Public Library	Public	\$ 18,414	\$ 28,745		
Hodgkins Public Library District	Public	\$ 18,414	\$ 7,994		
Homewood Public Library District	Public	\$ 18,414	\$ 21,755		
Indian Prairie Public Library District	Public	\$ 18,414	\$ 37,135		
Itasca Community Library	Public	\$ 18,414	\$ 14,871		
Justice Public Library District	Public	\$ 18,414	\$ 3,114		
Kaneville Public Library District	Public	\$ 18,414	\$ 842		
La Grange Public Library	Public	\$ 18,414	\$ 24,953		
LaGrange Park Public Library District	Public	\$ 18,414	\$ 16,908		
Lansing Public Library	Public	\$ 18,414	\$ 27,145		
Lyons Public Library	Public	\$ 18,414	\$ 6,155		
Markham Public Library	Public	\$ 18,414	\$ (4,830)		
Matteson Area Public Library District	Public	\$ 18,414	\$ 26,293		
Maywood Public Library District	Public	\$ 18,414	\$ 12,069		

Chart 1: SWAN Membership Fees
Fiscal Year 2027: July 1, 2026 - June 30, 2027
Draft

SWAN Library	Type	Public Library Base Fee	Public Library Funding Fee	School Library	Special Library
McCook Public Library District	Public	\$ 18,414	\$ 5,921		
Melrose Park Public Library	Public	\$ 18,414	\$ 8,128		
Messenger Public Library of North Aurora	Public	\$ 18,414	\$ 17,894		
Midlothian Public Library	Public	\$ 18,414	\$ 11,124		
Morton Arboretum	Special				\$ 12,500
Nancy L. McConathy Public Library District	Public	\$ 18,414	\$ 3,115		
National University of Health Sciences	Academic				
North Riverside Public Library District	Public	\$ 18,414	\$ 10,050		
Northlake Public Library District	Public	\$ 18,414	\$ 20,752		
Oak Brook Public Library	Public	\$ 18,414	\$ 11,652		
Oak Lawn Public Library	Public	\$ 18,414	\$ 47,534		
Oak Park Public Library	Public	\$ 18,414	\$ 93,289		
Palos Heights Public Library	Public	\$ 18,414	\$ 16,235		
Palos Park Public Library	Public	\$ 18,414	\$ 4,628		
Park Forest Public Library	Public	\$ 18,414	\$ 12,543		
Prairie Trails Public Library District	Public	\$ 18,414	\$ 18,617		
Richton Park Public Library District	Public	\$ 18,414	\$ 8,118		
River Forest Public Library	Public	\$ 18,414	\$ 13,317		
River Grove Public Library District	Public	\$ 18,414	\$ 4,820		
Riverdale Public Library District	Public	\$ 18,414	\$ 4,854		
Riverside Public Library	Public	\$ 18,414	\$ 12,089		
Roselle Public Library District	Public	\$ 18,414	\$ 20,691		
Schiller Park Public Library	Public	\$ 18,414	\$ 11,235		
South Holland Public Library	Public	\$ 18,414	\$ 20,163		
St Charles Public Library District	Public	\$ 18,414	\$ 72,542		
Steger-South Chicago Heights Public Library District	Public	\$ 18,414	\$ 4,376		
Stickney-Forest View Public Library District	Public	\$ 18,414	\$ 11,324		
Sugar Grove Public Library District	Public	\$ 18,414	\$ 14,265		
Summit Public Library District	Public	\$ 18,414	\$ 3,294		
Theosophical Society in America	Special				\$ 12,500
Thomas Ford Memorial Library	Public	\$ 18,414	\$ 14,561		
Thornton Public Library	Public	\$ 18,414	\$ 1,563		
Tinley Park Public Library	Public	\$ 18,414	\$ 54,205		
Town and Country Public Library District	Public	\$ 18,414	\$ 14,230		
University Park Public Library District	Public	\$ 18,414	\$ 5,798		
Villa Park Public Library	Public	\$ 18,414	\$ 20,800		
Warrenville Public Library District	Public	\$ 18,414	\$ 18,146		
West Chicago Public Library District	Public	\$ 18,414	\$ 23,856		
Westchester Public Library	Public	\$ 18,414	\$ 11,858		
Westmont Public Library	Public	\$ 18,414	\$ 19,586		
William Leonard Public Library District	Public	\$ 18,414	\$ 2,035		
Wood Dale Public Library District	Public	\$ 18,414	\$ 24,818		
Woodridge Public Library	Public	\$ 18,414	\$ 36,264		
Worth Public Library District	Public	\$ 18,414	\$ 7,727		

Chart 1: SWAN Membership Fees
Fiscal Year 2027: July 1, 2026 - June 30, 2027
Draft

SWAN Library	Academic Library	Fee	State LLSAP Grant Discount	SWAN Fee Total	Prior Year Fee
Acorn Public Library District		\$ 29,412	(\$5,373)	\$ 24,039	\$ 23,003
Addison Public Library		\$ 68,664	(\$5,373)	\$ 63,292	\$ 60,970
Alsip-Merrionette Park Public Library District		\$ 43,186	(\$5,373)	\$ 37,814	\$ 37,946
Batavia Public Library District		\$ 61,839	(\$5,373)	\$ 56,466	\$ 53,054
Bedford Park Public Library District		\$ 34,023	(\$5,373)	\$ 28,651	\$ 27,017
Beecher Community Library District		\$ 21,462	(\$5,373)	\$ 16,089	\$ 15,248
Bellwood Public Library		\$ 36,337	(\$5,373)	\$ 30,965	\$ 30,510
Bensenville Community Public Library District		\$ 34,331	(\$5,373)	\$ 28,959	\$ 27,298
Bensenville Elementary School District #2		\$ 17,500		\$ 17,500	\$ 17,500
Berkeley Public Library		\$ 22,445	(\$5,373)	\$ 17,073	\$ 16,270
Berwyn Public Library		\$ 54,292	(\$5,373)	\$ 48,919	\$ 47,926
Bloomingtondale Public Library		\$ 44,904	(\$5,373)	\$ 39,531	\$ 38,138
Blue Island Public Library		\$ 30,199	(\$5,373)	\$ 24,827	\$ 23,923
Bridgeview Public Library		\$ 27,654	(\$5,373)	\$ 22,282	\$ 21,656
Broadview Public Library District		\$ 30,016	(\$5,373)	\$ 24,644	\$ 21,392
Brookfield Public Library		\$ 37,912	(\$5,373)	\$ 32,539	\$ 33,803
Calumet City Public Library		\$ 31,345	(\$5,373)	\$ 25,972	\$ 25,148
Calumet Park Public Library		\$ 20,135	(\$5,373)	\$ 14,762	\$ 13,964
Carol Stream Public Library		\$ 48,916	(\$5,373)	\$ 43,543	\$ 42,322
Chicago Heights Public Library		\$ 25,140	(\$5,373)	\$ 19,767	\$ 19,202
Chicago Ridge Public Library		\$ 31,038	(\$5,373)	\$ 25,665	\$ 24,653
Cicero Public Library		\$ 33,696	(\$5,373)	\$ 28,324	\$ 27,879
Clarendon Hills Public Library		\$ 25,797	(\$5,373)	\$ 20,424	\$ 19,356
Crestwood Public Library District		\$ 24,096	(\$5,373)	\$ 18,723	\$ 18,110
Crete Public Library District		\$ 35,856	(\$5,373)	\$ 30,483	\$ 28,805
Dolton Public Library District		\$ 26,950	(\$5,373)	\$ 21,577	\$ 20,486
Downers Grove Public Library		\$ 70,549	(\$5,373)	\$ 65,176	\$ 61,884
Eisenhower Public Library District		\$ 56,633	(\$5,373)	\$ 51,260	\$ 48,298
Elmwood Park Public Library		\$ 33,432	(\$5,373)	\$ 28,059	\$ 26,973
Evergreen Park Public Library		\$ 30,223	(\$5,373)	\$ 24,850	\$ 23,880
Flossmoor Public Library		\$ 30,000	(\$5,373)	\$ 24,627	\$ 24,146
Forest Park Public Library		\$ 37,229	(\$5,373)	\$ 31,857	\$ 29,928
Frankfort Public Library District		\$ 44,069	(\$5,373)	\$ 38,696	\$ 36,061
Franklin Park Public Library District		\$ 36,038	(\$5,373)	\$ 30,665	\$ 29,325
Geneva Public Library District		\$ 69,100	(\$5,373)	\$ 63,728	\$ 59,392
Glen Ellyn Public Library		\$ 62,156	(\$5,373)	\$ 56,784	\$ 53,629
Glenside Public Library District		\$ 48,670	(\$5,373)	\$ 43,297	\$ 41,434
Glenwood-Lynwood Public Library District		\$ 31,036	(\$5,373)	\$ 25,664	\$ 25,204
Grande Prairie Public Library District		\$ 32,051	(\$5,373)	\$ 26,678	\$ 25,666
Green Hills Public Library District		\$ 41,654	(\$5,373)	\$ 36,281	\$ 34,898
Harvey Public Library District		\$ 27,349	(\$5,373)	\$ 21,976	\$ 21,051
Hillside Public Library		\$ 31,697	(\$5,373)	\$ 26,325	\$ 25,166
Hinsdale Public Library		\$ 47,159	(\$5,373)	\$ 41,787	\$ 39,388
Hodgkins Public Library District		\$ 26,408	(\$5,373)	\$ 21,035	\$ 18,166
Homewood Public Library District		\$ 40,169	(\$5,373)	\$ 34,797	\$ 33,714
Indian Prairie Public Library District		\$ 55,549	(\$5,373)	\$ 50,176	\$ 46,979
Itasca Community Library		\$ 33,285	(\$5,373)	\$ 27,912	\$ 26,860
Justice Public Library District		\$ 21,528	(\$5,373)	\$ 16,155	\$ 15,422
Kaneville Public Library District		\$ 19,256	(\$5,373)	\$ 13,883	\$ 13,179
La Grange Public Library		\$ 43,367	(\$5,373)	\$ 37,994	\$ 36,127
LaGrange Park Public Library District		\$ 35,322	(\$5,373)	\$ 29,950	\$ 28,714
Lansing Public Library		\$ 45,559	(\$5,373)	\$ 40,186	\$ 37,027
Lyons Public Library		\$ 24,568	(\$5,373)	\$ 19,196	\$ 18,761
Markham Public Library		\$ 13,583	(\$5,373)	\$ 8,211	\$ 18,060
Matteson Area Public Library District		\$ 44,707	(\$5,373)	\$ 39,334	\$ 36,519
Maywood Public Library District		\$ 30,483	(\$5,373)	\$ 25,110	\$ 24,535

Chart 1: SWAN Membership Fees
Fiscal Year 2027: July 1, 2026 - June 30, 2027
Draft

SWAN Library	Academic Library	Fee	State LLSAP Grant Discount	SWAN Fee Total	Prior Year Fee
McCook Public Library District		\$ 24,335	(\$5,373)	\$ 18,963	\$ 16,667
Melrose Park Public Library		\$ 26,542	(\$5,373)	\$ 21,169	\$ 20,544
Messenger Public Library of North Aurora		\$ 36,308	(\$5,373)	\$ 30,935	\$ 29,271
Midlothian Public Library		\$ 29,538	(\$5,373)	\$ 24,165	\$ 23,664
Morton Arboretum		\$ 12,500		\$ 12,500	\$ 12,500
Nancy L. McConathy Public Library District		\$ 21,529	(\$5,373)	\$ 16,156	\$ 15,287
National University of Health Sciences	\$ 11,000	\$ 11,000		\$ 11,000	\$ 11,000
North Riverside Public Library District		\$ 28,464	(\$5,373)	\$ 23,091	\$ 22,009
Northlake Public Library District		\$ 39,166	(\$5,373)	\$ 33,794	\$ 31,536
Oak Brook Public Library		\$ 30,065	(\$5,373)	\$ 24,693	\$ 21,947
Oak Lawn Public Library		\$ 65,947	(\$5,373)	\$ 60,575	\$ 60,128
Oak Park Public Library		\$ 111,703	(\$5,373)	\$ 106,330	\$ 99,306
Palos Heights Public Library		\$ 34,648	(\$5,373)	\$ 29,276	\$ 28,039
Palos Park Public Library		\$ 23,042	(\$5,373)	\$ 17,669	\$ 16,862
Park Forest Public Library		\$ 30,957	(\$5,373)	\$ 25,584	\$ 25,294
Prairie Trails Public Library District		\$ 37,031	(\$5,373)	\$ 31,658	\$ 30,406
Richton Park Public Library District		\$ 26,531	(\$5,373)	\$ 21,159	\$ 20,543
River Forest Public Library		\$ 31,731	(\$5,373)	\$ 26,358	\$ 25,142
River Grove Public Library District		\$ 23,234	(\$5,373)	\$ 17,861	\$ 16,762
Riverdale Public Library District		\$ 23,268	(\$5,373)	\$ 17,896	\$ 16,782
Riverside Public Library		\$ 30,503	(\$5,373)	\$ 25,130	\$ 23,914
Roselle Public Library District		\$ 39,104	(\$5,373)	\$ 33,732	\$ 31,550
Schiller Park Public Library		\$ 29,648	(\$5,373)	\$ 24,276	\$ 23,155
South Holland Public Library		\$ 38,577	(\$5,373)	\$ 33,204	\$ 32,313
St Charles Public Library District		\$ 90,956	(\$5,373)	\$ 85,584	\$ 84,099
Steger-South Chicago Heights Public Library District		\$ 22,790	(\$5,373)	\$ 17,417	\$ 16,328
Stickney-Forest View Public Library District		\$ 29,738	(\$5,373)	\$ 24,365	\$ 23,125
Sugar Grove Public Library District		\$ 32,679	(\$5,373)	\$ 27,306	\$ 18,493
Summit Public Library District		\$ 21,708	(\$5,373)	\$ 16,335	\$ 12,962
Theosophical Society in America		\$ 12,500		\$ 12,500	\$ 12,500
Thomas Ford Memorial Library		\$ 32,975	(\$5,373)	\$ 27,603	\$ 26,293
Thornton Public Library		\$ 19,977	(\$5,373)	\$ 14,604	\$ 13,804
Tinley Park Public Library		\$ 72,619	(\$5,373)	\$ 67,246	\$ 63,669
Town and Country Public Library District		\$ 32,644	(\$5,373)	\$ 27,271	\$ 25,561
University Park Public Library District		\$ 24,212	(\$5,373)	\$ 18,840	\$ 17,520
Villa Park Public Library		\$ 39,214	(\$5,373)	\$ 33,842	\$ 33,002
Warrenville Public Library District		\$ 36,560	(\$5,373)	\$ 31,188	\$ 29,131
West Chicago Public Library District		\$ 42,270	(\$5,373)	\$ 36,898	\$ 34,530
Westchester Public Library		\$ 30,272	(\$5,373)	\$ 24,899	\$ 23,955
Westmont Public Library		\$ 38,000	(\$5,373)	\$ 32,627	\$ 30,793
William Leonard Public Library District		\$ 20,449	(\$5,373)	\$ 15,076	\$ 14,454
Wood Dale Public Library District		\$ 43,232	(\$5,373)	\$ 37,860	\$ 35,762
Woodridge Public Library		\$ 54,678	(\$5,373)	\$ 49,305	\$ 46,644
Worth Public Library District		\$ 26,141	(\$5,373)	\$ 20,768	\$ 19,924

Chart 1: SWAN Membership Fees
Fiscal Year 2027: July 1, 2026 - June 30, 2027
Draft

SWAN Library	Increase/ (Decrease)
Acorn Public Library District	\$ 1,036
Addison Public Library	\$2,322
Alsip-Merrionette Park Public Library District	(\$132)
Batavia Public Library District	\$3,412
Bedford Park Public Library District	\$1,634
Beecher Community Library District	\$842
Bellwood Public Library	\$455
Bensenville Community Public Library District	\$1,661
Bensenville Elementary School District #2	\$0
Berkeley Public Library	\$802
Berwyn Public Library	\$993
Bloomington Public Library	\$1,394
Blue Island Public Library	\$904
Bridgeview Public Library	\$625
Broadview Public Library District	\$3,251
Brookfield Public Library	(\$1,264)
Calumet City Public Library	\$824
Calumet Park Public Library	\$798
Carol Stream Public Library	\$1,221
Chicago Heights Public Library	\$566
Chicago Ridge Public Library	\$1,012
Cicero Public Library	\$445
Clarendon Hills Public Library	\$1,069
Crestwood Public Library District	\$613
Crete Public Library District	\$1,678
Dolton Public Library District	\$1,090
Downers Grove Public Library	\$3,292
Eisenhower Public Library District	\$2,963
Elmwood Park Public Library	\$1,086
Evergreen Park Public Library	\$971
Flossmoor Public Library	\$481
Forest Park Public Library	\$1,929
Frankfort Public Library District	\$2,635
Franklin Park Public Library District	\$1,340
Geneva Public Library District	\$4,336
Glen Ellyn Public Library	\$3,155
Glenside Public Library District	\$1,863
Glenwood-Lynwood Public Library District	\$459
Grande Prairie Public Library District	\$1,012
Green Hills Public Library District	\$1,383
Harvey Public Library District	\$925
Hillside Public Library	\$1,159
Hinsdale Public Library	\$2,398
Hodgkins Public Library District	\$2,870
Homewood Public Library District	\$1,082
Indian Prairie Public Library District	\$3,198
Itasca Community Library	\$1,052
Justice Public Library District	\$733
Kaneville Public Library District	\$705
La Grange Public Library	\$1,867
LaGrange Park Public Library District	\$1,235
Lansing Public Library	\$3,160
Lyons Public Library	\$435
Markham Public Library	(\$9,849)
Matteson Area Public Library District	\$2,815
Maywood Public Library District	\$575

Chart 1: SWAN Membership Fees
Fiscal Year 2027: July 1, 2026 - June 30, 2027
Draft

SWAN Library	Increase/ (Decrease)
McCook Public Library District	\$2,296
Melrose Park Public Library	\$625
Messenger Public Library of North Aurora	\$1,663
Midlothian Public Library	\$501
Morton Arboretum	\$0
Nancy L. McConathy Public Library District	\$869
National University of Health Sciences	\$0
North Riverside Public Library District	\$1,082
Northlake Public Library District	\$2,258
Oak Brook Public Library	\$2,746
Oak Lawn Public Library	\$447
Oak Park Public Library	\$7,024
Palos Heights Public Library	\$1,237
Palos Park Public Library	\$807
Park Forest Public Library	\$291
Prairie Trails Public Library District	\$1,252
Richton Park Public Library District	\$616
River Forest Public Library	\$1,216
River Grove Public Library District	\$1,099
Riverdale Public Library District	\$1,113
Riverside Public Library	\$1,216
Roselle Public Library District	\$2,182
Schiller Park Public Library	\$1,120
South Holland Public Library	\$892
St Charles Public Library District	\$1,484
Steger-South Chicago Heights Public Library District	\$1,089
Stickney-Forest View Public Library District	\$1,240
Sugar Grove Public Library District	\$8,813
Summit Public Library District	\$3,373
Theosophical Society in America	\$0
Thomas Ford Memorial Library	\$1,309
Thornton Public Library	\$800
Tinley Park Public Library	\$3,577
Town and Country Public Library District	\$1,710
University Park Public Library District	\$1,319
Villa Park Public Library	\$840
Warrenville Public Library District	\$2,056
West Chicago Public Library District	\$2,367
Westchester Public Library	\$944
Westmont Public Library	\$1,834
William Leonard Public Library District	\$622
Wood Dale Public Library District	\$2,097
Woodridge Public Library	\$2,660
Worth Public Library District	\$845

Chart 2: FY27 Public Library County Tax Payments

Library Name	Total Tax Revenue Issued	Bond Amount 2023 (Removed)	Public Library Tax Revenue Total 2023	Prior year Tax Revenue	Tax revenue change
Acorn Public Library District	\$1,332,800.67	(\$30,398.00)	\$1,302,402.67	\$1,269,009.67	\$33,393.00
Addison Public Library	\$5,950,918.21	\$0.00	\$5,950,918.21	\$5,807,342.32	\$143,575.89
Alsip-Merrionette Park Public Library District	\$2,933,707.77	\$0.00	\$2,933,707.77	\$3,055,208.72	(\$121,500.95)
Batavia Public Library District	\$5,142,576.09	\$0.00	\$5,142,576.09	\$4,861,162.56	\$281,413.53
Bedford Park Public Library District	\$1,848,574.03	\$0.00	\$1,848,574.03	\$1,748,860.81	\$99,713.22
Beecher Community Library District	\$360,949.64	\$0.00	\$360,949.64	\$341,966.12	\$18,983.52
Bellwood Public Library	\$2,122,600.63	\$0.00	\$2,122,600.63	\$2,166,341.45	(\$43,740.82)
Bensenville Community Public Library District	\$1,885,042.11	\$0.00	\$1,885,042.11	\$1,782,359.09	\$102,683.02
Berkeley Public Library	\$477,414.11	\$0.00	\$477,414.11	\$464,203.00	\$13,211.11
Berwyn Public Library	\$4,248,840.75	\$0.00	\$4,248,840.75	\$4,248,191.73	\$649.02
Bloomington Public Library	\$3,137,102.97	\$0.00	\$3,137,102.97	\$3,078,139.27	\$58,963.70
Blue Island Public Library	\$1,395,708.54	\$0.00	\$1,395,708.54	\$1,378,933.29	\$16,775.25
Bridgeview Public Library	\$1,349,531.99	(\$255,250.00)	\$1,094,281.99	\$1,108,019.24	(\$13,737.25)
Broadview Public Library District	\$1,641,877.95	(\$267,872.50)	\$1,374,005.45	\$1,076,484.76	\$297,520.69
Brookfield Public Library	\$2,667,969.22	(\$358,939.19)	\$2,309,030.03	\$2,559,940.87	(\$250,910.84)
Calumet City Public Library	\$1,531,337.00	\$0.00	\$1,531,337.00	\$1,525,438.11	\$5,898.89
Calumet Park Public Library	\$203,796.10	\$0.00	\$203,796.10	\$188,515.49	\$15,280.61
Carol Stream Public Library	\$3,846,680.09	(\$234,461.00)	\$3,612,219.09	\$3,578,277.99	\$33,941.10
Chicago Heights Public Library	\$796,546.13	\$0.00	\$796,546.13	\$814,603.60	(\$18,057.47)
Chicago Ridge Public Library	\$1,494,971.54	\$0.00	\$1,494,971.54	\$1,466,281.72	\$28,689.82
Cicero Public Library	\$1,809,831.75	\$0.00	\$1,809,831.75	\$1,851,819.44	(\$41,987.69)
Clarendon Hills Public Library	\$874,359.46	\$0.00	\$874,359.46	\$833,054.03	\$41,305.43
Crestwood Public Library District	\$672,906.26	\$0.00	\$672,906.26	\$684,188.23	(\$11,281.97)
Crete Public Library District	\$2,065,579.14	\$0.00	\$2,065,579.14	\$1,962,545.63	\$103,033.51
Dolton Public Library District	\$1,010,841.96	\$0.00	\$1,010,841.96	\$968,199.86	\$42,642.10
Downers Grove Public Library	\$6,174,083.21	\$0.00	\$6,174,083.21	\$5,916,610.89	\$257,472.32
Eisenhower Public Library District	\$5,198,216.71	(\$672,103.00)	\$4,526,113.71	\$4,292,590.08	\$233,523.63
Elmwood Park Public Library	\$1,778,477.64	\$0.00	\$1,778,477.64	\$1,743,589.57	\$34,888.07
Evergreen Park Public Library	\$1,398,476.10	\$0.00	\$1,398,476.10	\$1,373,788.83	\$24,687.27
Flossmoor Public Library	\$1,372,078.03	\$0.00	\$1,372,078.03	\$1,405,656.26	(\$33,578.23)
Forest Park Public Library	\$2,228,222.64	\$0.00	\$2,228,222.64	\$2,096,754.75	\$131,467.89
Frankfort Public Library District	\$3,038,186.65	\$0.00	\$3,038,186.65	\$2,829,936.22	\$208,250.43
Franklin Park Public Library District	\$2,087,118.37	\$0.00	\$2,087,118.37	\$2,024,699.57	\$62,418.80
Geneva Public Library District	\$7,583,510.42	(\$1,580,946.26)	\$6,002,564.16	\$5,618,737.52	\$383,826.64
Glen Ellyn Public Library	\$5,180,197.73	\$0.00	\$5,180,197.73	\$4,929,803.34	\$250,394.39
Glenside Public Library District	\$3,948,606.29	(\$365,565.02)	\$3,583,041.27	\$3,472,170.30	\$110,870.97
Glenwood-Lynwood Public Library District	\$1,950,202.50	(\$455,375.00)	\$1,494,827.50	\$1,532,156.70	(\$37,329.20)
Grande Prairie Public Library District	\$1,614,953.52	\$0.00	\$1,614,953.52	\$1,587,344.63	\$27,608.89
Green Hills Public Library District	\$3,157,192.47	(\$405,000.00)	\$2,752,192.47	\$2,690,855.47	\$61,337.00
Harvey Public Library District	\$1,058,133.71	\$0.00	\$1,058,133.71	\$1,035,728.61	\$22,405.10
Hillside Public Library	\$1,573,078.95	\$0.00	\$1,573,078.95	\$1,527,540.33	\$45,538.62
Hinsdale Public Library	\$3,672,691.91	(\$268,512.00)	\$3,404,179.91	\$3,227,601.30	\$176,578.61
Hodgkins Public Library District	\$1,236,942.55	(\$290,227.78)	\$946,714.77	\$690,785.65	\$255,929.12
Homewood Public Library District	\$2,576,395.30	\$0.00	\$2,576,395.30	\$2,549,377.36	\$27,017.94
Indian Prairie Public Library District	\$4,397,716.35	\$0.00	\$4,397,716.35	\$4,134,892.56	\$262,823.79
Itasca Community Library	\$1,761,069.04	\$0.00	\$1,761,069.04	\$1,730,052.08	\$31,016.96
Justice Public Library District	\$368,749.60	\$0.00	\$368,749.60	\$362,795.71	\$5,953.89
Kaneville Public Library District	\$99,702.89	\$0.00	\$99,702.89	\$94,654.53	\$5,048.36
La Grange Public Library	\$3,579,833.08	(\$624,750.00)	\$2,955,083.08	\$2,837,794.58	\$117,288.50
LaGrange Park Public Library District	\$2,149,525.12	(\$147,150.00)	\$2,002,375.12	\$1,951,690.74	\$50,684.38
Lansing Public Library	\$3,214,680.24	\$0.00	\$3,214,680.24	\$2,945,311.21	\$269,369.03
Lyons Public Library	\$743,864.82	(\$15,000.00)	\$728,864.82	\$761,894.25	(\$33,029.43)
Markham Public Library	\$748,026.54	(\$1,320,075.00)	(\$572,048.46)	\$678,144.13	(\$1,250,192.59)
Matteson Area Public Library District	\$3,113,736.92	\$0.00	\$3,113,736.92	\$2,884,649.41	\$229,087.51
Maywood Public Library District	\$1,429,291.12	\$0.00	\$1,429,291.12	\$1,452,141.73	(\$22,850.61)
McCook Public Library District	\$701,232.63	\$0.00	\$701,232.63	\$511,620.61	\$189,612.02
Melrose Park Public Library	\$962,566.37	\$0.00	\$962,566.37	\$975,115.55	(\$12,549.18)
Messenger Public Library of North Aurora	\$2,119,065.49	\$0.00	\$2,119,065.49	\$2,018,305.10	\$100,760.39
Midlothian Public Library	\$1,563,136.52	(\$245,802.50)	\$1,317,334.02	\$1,348,004.64	(\$30,670.62)
Nancy L. McConathy Public Library District	\$368,856.36	\$0.00	\$368,856.36	\$346,700.23	\$22,156.13
North Riverside Public Library District	\$1,190,190.10	\$0.00	\$1,190,190.10	\$1,150,236.54	\$39,953.56
Northlake Public Library District	\$3,180,386.86	(\$722,775.00)	\$2,457,611.86	\$2,288,994.60	\$168,617.26

Chart 2: FY27 Public Library County Tax Payments

Library Name	Total Tax Revenue Issued	Bond Amount 2023 (Removed)	Public Library Tax Revenue Total 2023	Prior year Tax Revenue	Tax revenue change
Oak Brook Public Library	\$1,379,838.00	\$0.00	\$1,379,838.00	\$1,142,808.00	\$237,030.00
Oak Lawn Public Library	\$5,629,177.14	\$0.00	\$5,629,177.14	\$5,706,720.30	(\$77,543.16)
Oak Park Public Library	\$11,047,738.49	\$0.00	\$11,047,738.49	\$10,389,827.72	\$657,910.77
Palos Heights Public Library	\$1,922,582.13	\$0.00	\$1,922,582.13	\$1,870,990.57	\$51,591.56
Palos Park Public Library	\$548,060.64	\$0.00	\$548,060.64	\$534,963.75	\$13,096.89
Park Forest Public Library	\$1,485,432.13	\$0.00	\$1,485,432.13	\$1,542,818.56	(\$57,386.43)
Prairie Trails Public Library District	\$2,204,719.82	\$0.00	\$2,204,719.82	\$2,153,914.87	\$50,804.95
Richton Park Public Library District	\$1,357,423.41	(\$396,105.00)	\$961,318.41	\$974,938.44	(\$13,620.03)
River Forest Public Library	\$1,577,031.16	\$0.00	\$1,577,031.16	\$1,524,716.53	\$52,314.63
River Grove Public Library District	\$570,799.48	\$0.00	\$570,799.48	\$523,030.45	\$47,769.03
Riverdale Public Library District	\$574,877.52	\$0.00	\$574,877.52	\$525,401.85	
Riverside Public Library	\$1,431,615.76	\$0.00	\$1,431,615.76	\$1,377,871.02	\$53,744.74
Roselle Public Library District	\$2,450,278.30	\$0.00	\$2,450,278.30	\$2,290,682.47	\$159,595.83
Schiller Park Public Library	\$1,330,451.90	\$0.00	\$1,330,451.90	\$1,287,222.46	\$43,229.44
South Holland Public Library	\$2,387,825.79	\$0.00	\$2,387,825.79	\$2,381,813.27	\$6,012.52
St Charles Public Library District	\$9,031,982.38	(\$441,125.00)	\$8,590,857.38	\$8,572,096.88	\$18,760.50
Steger-South Chicago Heights Public Library District	\$518,196.55	\$0.00	\$518,196.55	\$471,087.73	\$47,108.82
Stickney-Forest View Public Library District	\$1,480,708.72	(\$139,650.00)	\$1,341,058.72	\$1,283,605.45	\$57,453.27
Sugar Grove Public Library District	\$1,689,334.16	\$0.00	\$1,689,334.16	\$729,888.04	\$959,446.12
Summit Public Library District	\$390,066.52	\$0.00	\$390,066.52	\$68,728.98	\$321,337.54
Thomas Ford Memorial Library	\$1,963,631.43	(\$239,200.00)	\$1,724,431.43	\$1,662,295.71	\$62,135.72
Thornton Public Library	\$185,072.33	\$0.00	\$185,072.33	\$169,462.88	\$15,609.45
Tinley Park Public Library	\$6,419,220.59	\$0.00	\$6,419,220.59	\$6,129,991.21	\$289,229.38
Town and Country Public Library District	\$1,685,194.87	\$0.00	\$1,685,194.87	\$1,574,800.80	\$110,394.07
University Park Public Library District	\$686,671.13	\$0.00	\$686,671.13	\$613,660.20	\$73,010.93
Villa Park Public Library	\$3,296,932.70	(\$833,650.00)	\$2,463,282.70	\$2,464,212.37	(\$929.67)
Warrenville Public Library District	\$2,317,812.06	(\$168,830.25)	\$2,148,981.81	\$2,001,523.62	\$147,458.19
West Chicago Public Library District	\$2,825,203.15	\$0.00	\$2,825,203.15	\$2,646,931.25	\$178,271.90
Westchester Public Library	\$1,404,255.53	\$0.00	\$1,404,255.53	\$1,382,761.67	\$21,493.86
Westmont Public Library	\$2,319,440.57	\$0.00	\$2,319,440.57	\$2,200,186.15	\$119,254.42
William Leonard Public Library District	\$240,983.01	\$0.00	\$240,983.01	\$247,119.95	(\$6,136.94)
Wood Dale Public Library District	\$2,939,134.85	\$0.00	\$2,939,134.85	\$2,794,173.72	\$144,961.13
Woodridge Public Library	\$4,294,532.97	\$0.00	\$4,294,532.97	\$4,094,964.50	\$199,568.47
Worth Public Library District	\$915,075.62	\$0.00	\$915,075.62	\$900,923.00	\$14,152.62

Chart 3: Public Library Bond Amounts Reported

Public Library	Bond Amt for FY27 Fee Formula (2023)	Annual Debt Service 2024	Annual Debt Service 2025	Annual Debt Service 2026	Annual Debt Service 2027	Annual Debt Service 2028
Acorn Public Library District	\$ 30,398	\$ 30,478.00	\$ 29,518.00	\$ 29,558.00	\$ 29,483.00	\$ 29,365.00
Addison Public Library	\$ -					
Alsip-Merrionette Park Public Library District	\$ -					
Batavia Public Library District	\$ -					
Bedford Park Public Library District	\$ -					
Beecher Community Library District	\$ -					
Bellwood Public Library	\$ -					
Bensenville Community Public Library District	\$ -					
Berkeley Public Library	\$ -					
Berwyn Public Library	\$ -					
Bloomington Public Library	\$ -					
Blue Island Public Library	\$ -					
Bridgeview Public Library	\$ 255,250	\$ 258,650.00	\$ 256,750.00	\$ 254,700.00	\$ 257,500.00	
Broadview Public Library District	\$ 267,873	\$ 268,172.50	\$ 272,842.50	\$ 272,252.50	\$ 270,652.50	\$ 268,902.50
Brookfield Public Library	\$ 358,939	\$ 354,302.90	\$ 349,575.04	\$ 344,753.80	\$ 339,837.34	\$ 334,823.79
Calumet City Public Library	\$ -					
Calumet Park Public Library	\$ -					
Carol Stream Public Library	\$ 234,461	\$ 234,461.00	\$ 234,461.00	\$ 234,461.00	\$ 234,461.00	
Chicago Heights Public Library	\$ -					
Chicago Ridge Public Library	\$ -					
Cicero Public Library	\$ -					
Clarendon Hills Public Library	\$ -					
Crestwood Public Library District	\$ -					
Crete Public Library District	\$ -					
Dolton Public Library District	\$ -					
Downers Grove Public Library	\$ -					
Eisenhower Public Library District	\$ 672,103	\$ 693,519.00	\$ 669,144.00	\$ 667,968.00	\$ 671,616.00	
Elmwood Park Public Library	\$ -					
Evergreen Park Public Library	\$ -					
Flossmoor Public Library	\$ -					
Forest Park Public Library	\$ -					
Frankfort Public Library District	\$ -		\$ 161,584.26	\$ 188,564.25	\$ 182,742.22	\$ 176,920.19
Franklin Park Public Library District	\$ -					
Geneva Public Library District	\$ 1,580,946	\$ 1,588,471.26	\$ 1,598,821.26	\$ 1,599,921.26	\$ 1,606,646.26	\$ 1,610,821.26
Glen Ellyn Public Library	\$ -					
Glenside Public Library District	\$ 365,565	\$ 368,595.02	\$ 365,987.52	\$ 362,918.77	\$ 374,015.63	\$ 359,140.63
Glenwood-Lynwood Public Library District	\$ 455,375	\$ 453,825.00	\$ 455,225.00	\$ 451,025.00	\$ 456,425.00	\$ 451,025.00
Grande Prairie Public Library District	\$ -					
Green Hills Public Library District	\$ 405,000	\$ 150,000.00				
Harvey Public Library District	\$ -					
Hillside Public Library	\$ -					
Hinsdale Public Library	\$ 268,512	\$ 268,712.00	\$ 283,812.00	\$ 293,114.00	\$ 296,816.00	
Hodgkins Public Library District	\$ 290,228	\$ 23,800.00	\$ 238,000.00	\$ 238,000.00	\$ 458,000.00	\$ 457,000.00
Homewood Public Library District	\$ -					
Indian Prairie Public Library District	\$ -					
Itasca Community Library	\$ -					
Justice Public Library District	\$ -					
Kaneville Public Library District	\$ -					

Chart 3: Public Library Bond Amounts Reported

Public Library	Bond Amt for FY27 Fee Formula (2023)	Annual Debt Service 2024	Annual Debt Service 2025	Annual Debt Service 2026	Annual Debt Service 2027	Annual Debt Service 2028
La Grange Public Library	\$ 624,750	\$ 612,750.00				
LaGrange Park Public Library District	\$ 147,150	\$ 152,438.00				
Lansing Public Library	\$ -					
Lyons Public Library	\$ 15,000	\$ 15,000.00	\$ 20,000.00	\$ 20,000.00	\$ 20,000.00	\$ 20,000.00
Markham Public Library	\$ 1,320,075	\$ 27,000.00	\$ 613,500.00			
Matteson Area Public Library District	\$ -					
Maywood Public Library District	\$ -					
McCook Public Library District	\$ -					
Melrose Park Public Library	\$ -					
Messenger Public Library of North Aurora	\$ -					
Midlothian Public Library	\$ 245,803	\$ 251,907.50	\$ 252,607.50	\$ 247,974.50	\$ 193,095.50	\$ 189,236.00
Nancy L. McConathy Public Library District	\$ -					
North Riverside Public Library District	\$ -					
Northlake Public Library District	\$ 722,775	\$ 714,150.00				
Oak Brook Public Library	\$ -					
Oak Lawn Public Library	\$ -					
Oak Park Public Library	\$ -					
Palos Heights Public Library	\$ -					
Palos Park Public Library	\$ -					
Park Forest Public Library	\$ -					
Prairie Trails Public Library District	\$ -					
Richton Park Public Library District	\$ 396,105	\$ 392,406.06	\$ 394,997.96	\$ 396,234.00	\$ 392,456.00	\$ 393,545.00
River Forest Public Library	\$ -					
River Grove Public Library District	\$ -		\$ 5,156.25	\$ 76,683.04	\$ 76,683.04	\$ 76,683.04
Riverdale Public Library District	\$ -					
Riverside Public Library	\$ -					
Roselle Public Library District	\$ -					
Schiller Park Public Library	\$ -					
South Holland Public Library	\$ -					
St Charles Public Library District	\$ 441,125	\$ 448,625.00	\$ 455,825.00	\$ 463,150.00	\$ 474,750.00	\$ 480,950.00
Steger-South Chicago Heights Public Library District	\$ -					
Stickney-Forest View Public Library District	\$ 139,650	\$ 142,150.00	\$ 143,250.00	\$ 144,200.00		
Sugar Grove Public Library District	\$ -					
Summit Public Library District	\$ -					
Thomas Ford Memorial Library	\$ 239,200	\$ 236,600.00	\$ 233,800.00	\$ 230,800.00	\$ 232,600.00	\$ 234,000.00
Thornton Public Library	\$ -					
Tinley Park Public Library	\$ -					
Town and Country Public Library District	\$ -					
University Park Public Library District	\$ -					
Villa Park Public Library	\$ 833,650	\$ 834,650.00	\$ 834,850.00	\$ 839,250.00	\$ 834,850.00	\$ 834,550.00
Warrenville Public Library District	\$ 168,830	\$170,895.00	\$167,875.25	\$171,741.00	\$173,507.25	\$175,174.00
West Chicago Public Library District	\$ -					
Westchester Public Library	\$ -					
Westmont Public Library	\$ -					
William Leonard Public Library District	\$ -					
Wood Dale Public Library District	\$ -					
Woodridge Public Library	\$ -					

Chart 3: Public Library Bond Amounts Reported

Public Library	Bond Amt for FY27 Fee Formula (2023)	Annual Debt Service 2024	Annual Debt Service 2025	Annual Debt Service 2026	Annual Debt Service 2027	Annual Debt Service 2028
Worth Public Library District	\$ -					

Chart 4: Academic, School, Special Library Fees

Academic Libraries

- 1) Student Population, rounded to nearest 1,000 * 2 [Fall IBHE profile]
- 2) Title Count rounded to nearest 1,000 / 3

	Population	Item Count	Pop Fee	Item/Title Fee	FY27 Total
National University of Health Sciences	364	27,478	\$ 2,000	\$ 9,000	\$ 11,000

School Libraries

- 1) Student Population, rounded to nearest 1000 * 5 [Illinois Report Card data]
- 2) Building Location/Branch Fee \$2,500 per building

	Population	Buildings	Pop Fee	Building Fee	FY27 Total
Bensenville School District #2	2,009	3	\$ 10,000	\$ 7,500	\$ 17,500

Special Libraries

- 1) Title Fee (Tier 1 <10,000 \$7,500; Tier 2 <40,000 \$10,000; Tier 3 > 40,000 \$12,500)
- 2) Building Location/Branch Fee \$2,500 per building

	Buildings	Title Count	Building Fee	Title Fee	FY27 Total
Morton Arboretum	1	23,747	\$ 2,500	\$ 10,000	\$ 12,500
The Theosophical Society in America	1	29,485	\$ 2,500	\$ 10,000	\$ 12,500